





8 Lighthouse Road AIREYS INLET, VIC

 2  1

BEACH SIDE CLASSIC

This little classic is located in the much sought after Lighthouse precinct of Aireys Inlet.

Built in the late 1960s the property has been held by the one family since 1963. The house has remained largely untouched since except for a new rear deck.

Set on a beautiful block of around 800m2 with a great rear sunny aspect and mature trees, it is only a short walk to Steppe beach, Inlet beach and metres from the Alan Noble sanctuary, the shops, restaurants and the pub.

Enjoy the north facing back deck area whilst relaxing after a day spent on the beach. Properties such as this are all too rarely available in Aireys Inlet.

Suitable to be used as is, or ripe for renovation this two and a half bedroom beach house transports you back to a bygone era.

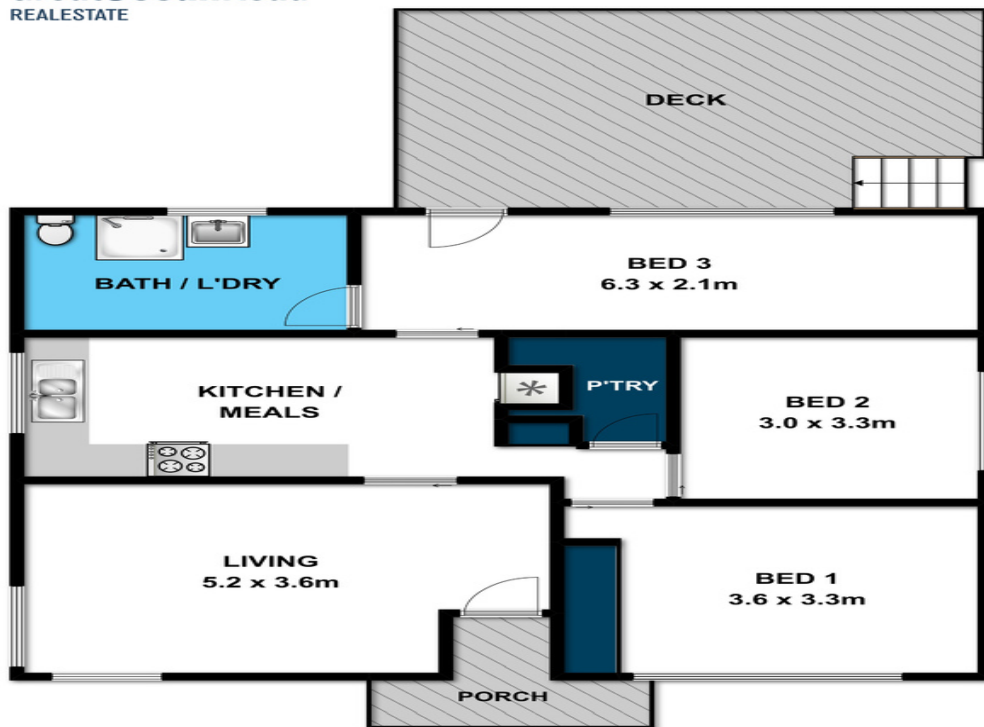
Price: \$650,000 - \$710,000

James Worssam

0418 585 815

Ben Jackson

0437 380 706



Whilst bwrn.com.au has made every attempt to ensure the accuracy of the floor plan contained here, measurements are approximate and no responsibility is taken for any error, omission, or mis-statement. This plan is for illustrative purposes only.



8 Lighthouse Road

Aireys Inlet