



2/15 Hopetoun Terrace LORNE, VIC

 4
  2.5
  1

MODERN HOME

This Modern 4 bedroom, 2.5 bathroom house is in a quiet street located within walking distance to the main street of Lorne.

sleek modern fittings. Features include polished concrete flooring, Miele appliances, built in Gas fireplace, floor to ceiling windows and built in wardrobes.

Large decking to the North, ample car parking and low maintenance garden.

Available for a 12 month lease.

Price: \$600 PW
Available Date: 2017-03-31

Jeanette Hancock

UNIT 02
(MIDDLE LEVEL)
REVISED 24.01.2012

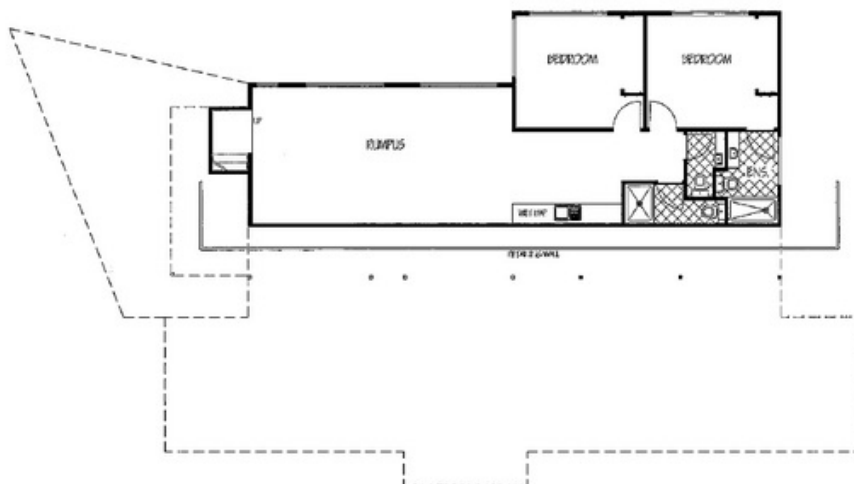


FLOOR PLAN

04/01

OWNERS	PROJECT	DOCUMENTATION	FLOOR PLAN		REP UP-AD 443
			DATE	SCALE	
CHARLE WHEATON AT OCEANVIEW LOME, 2012	CONSTRUCTION DRAWINGS, 15 HOTTON TERRACE, LOME, 2012	WAYNE MACCARTHY & Associates PO BOX 6041, AUCKLAND 2010 Tel: (09) 52 695 042 - CH 2699580	DATE	SCALE	REP UP-AD 443
			04/01	1:100	02

UNIT 02
(LOWEST LEVEL)
REVISED 24.01.2012



FLOOR PLAN

NOTE:
APART FROM THE STAIRWELL THIS LOWEST
LEVEL IS AN INFILL BETWEEN THE EXISTING
STRUCTURE - DIMENSIONS ARE NOMINAL

05/01

OWNERS	PROJECT	DOCUMENTATION	FLOOR PLAN		REP UP-AD 443
			DATE	SCALE	
CHARLE WHEATON AT OCEANVIEW LOME, 2012	CONSTRUCTION DRAWINGS, 15 HOTTON TERRACE, LOME, 2012	WAYNE MACCARTHY & Associates PO BOX 6041, AUCKLAND 2010 Tel: (09) 52 695 042 - CH 2699580	DATE	SCALE	REP UP-AD 443
			04/01	1:100	02