



15 Lialeeta Road FAIRHAVEN, VIC

 3
  2
  1

COMMANDING VIEWS AND LOCATION

Set high on the hill with commanding ocean views across the inlet over the lighthouse and beyond. A very neat and tidy double storey house with a bright and light easterly aspect.

Comprising three bedrooms, two large living areas, two bathrooms as well as a lock up garage.

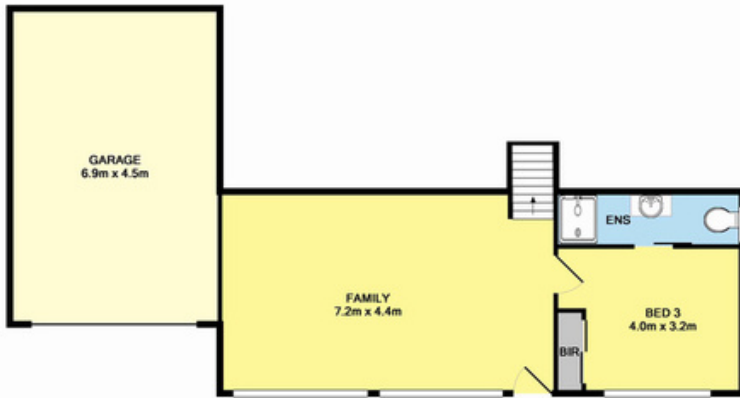
On a large block of around 1340 sqm. It is only a very short walk to the superb Fairhaven beach by way of a reserve track.

Set amongst beautiful gardens offering sheltered area from which to enjoy the sun but protection from all winds.

Price: \$1,250,000

James Worssam
0418 585 815

Peter Boyce
0419 582 448



GROUND FLOOR

Whilst every attempt has been made to ensure the accuracy of the floor plan contained here, measurements of doors, windows, rooms and any other items are approximate and no responsibility is taken for any error, omission, or mis-statement. This plan is for illustrative purposes only and should be used as such by any prospective purchaser. The services, systems and appliances shown have not been tested and no guarantee as to their operability or efficiency can be given.



1ST FLOOR