



125 Morris Access SKENES CREEK, VIC



5



3



3

## Otway's Tranquility with Stunning Coastal Views

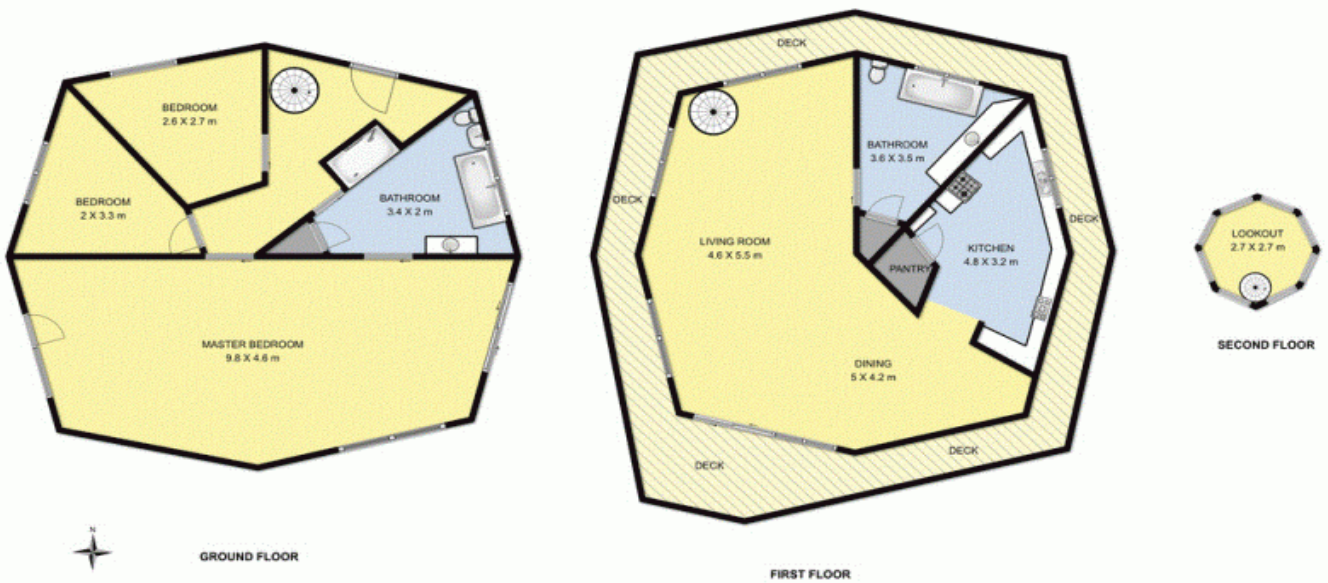
Privately located at the end of a semi-private access road and perched high above the coast with stunning views to the lights of Apollo Bay, Cape Otway and the ocean including the King Island Lighthouse beam; this unique 167 acre property delivers a tranquil haven away from the madding crowd. Offering the new owners peace and solitude, amazing bird life and an Otway Ranges backdrop - ideally positioned between Lorne and just 15 minutes from Apollo Bay. Built by Ray Newell from the famed Eltham Shire the Octagonal designed house features wonderful rough-hewn local stone, Oregon beams, Redwood panels plus Sequoia and Kauri timber finishes. With an interior over three levels comprising three bedrooms, two bathrooms, well-equipped kitchen and generous dining and living area flowing to a wide deck with wrap around verandahs and third level observatory or potential study/office.

**Price:**

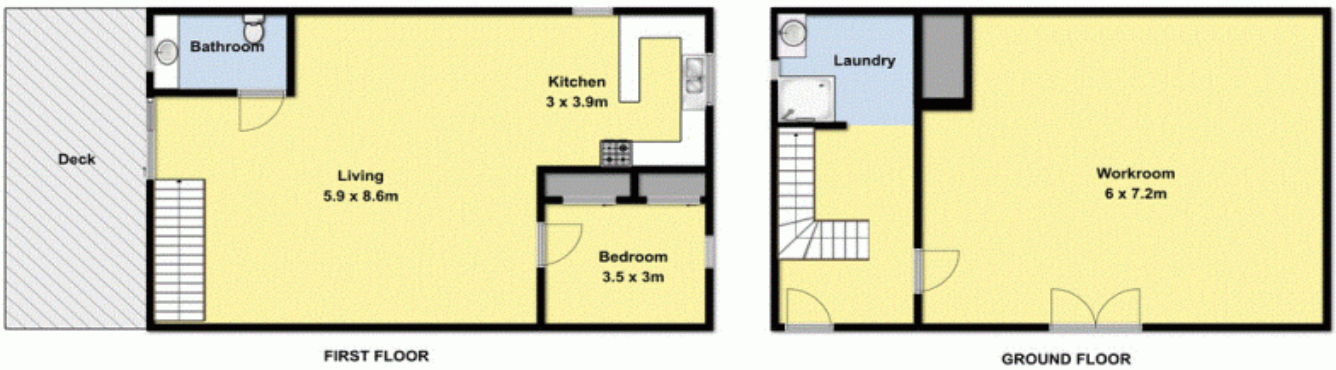
\$800,000+ buyers

**Darren Brimacombe**

0418 317 424



While every attempt has been made to ensure the accuracy of the floor plan contained here, measurements of doors, windows, stairs and any other items are approximate and no responsibility is taken for any error, omission or mis-statement. The plan is for illustrative purposes only and should be used as such for any purpose other than purchase. The various systems and appliances shown have not been tested and no guarantee is given as to their operability or efficiency can be given.



While every attempt has been made to ensure the accuracy of the floor plan contained here, measurements of doors, windows, stairs and any other items are approximate and no responsibility is taken for any error, omission or mis-statement. The plan is for illustrative purposes only and should be used as such for any purpose other than purchase. The various systems and appliances shown have not been tested and no guarantee is given as to their operability or efficiency can be given.