



102 Melba Parade ANGLESEA, VIC



4



2



3

## PATHWAY TO POINT ROADKNIGHT

With just a pathway to take you to Point Roadknight beach, there are only a select few properties in all of Anglesea & the coast that are located this close to the water. This property isn't just about the proximity to one of the most popular beaches, because of its exceptional beauty, clarity of water and softness of sand. The 'Mark Gleeson' designed and built double storey home, has meticulous attention to detail not often found in the coastal market. It's a demonstration of perfection and special qualities that deliver an overall positive experience when residing here. Construction of materials such as the individually cut sandstone compliment the surroundings. From stepping in the door, the underfloor heating immediately adds warmth to your soul. With the brief from the owners that undertook the build, the many frameless windows draw in an abundance of light and highlight the natural artistic design of the environment. There are many choices to sit and take it all in, the caf? style bar in the kitchen have windows that open up to the front deck, the rear deck overlooks the gently sloping & willowing Moonah trees. Even soaking in the bath gives you the option of gazing into the backyard or stars in the sky with its featured glass. There are two bedrooms with BIR downstairs, a study which could also be a bedroom & has sliding

**Price:**

EXPRESSIONS OF INTEREST

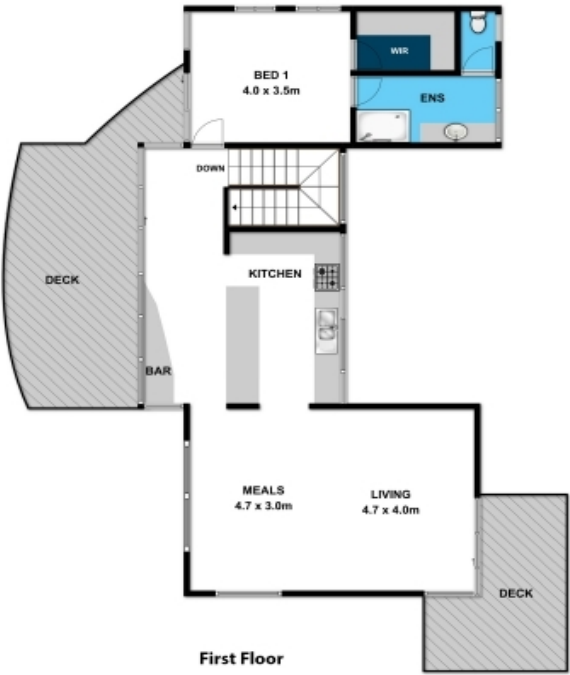
**Nicole Spiteri**

**Ben Jackson**

0437 380 706



Ground Floor



First Floor

Whilst [burm.com.au](http://www.burm.com.au) has made every attempt to ensure the accuracy of the floor plan contained here, measurements are approximate and no responsibility is taken for any error, omission, or mis-statement. This plan is for illustrative purposes only.



102 Melba Parade

Anglesea