

7 Waverley Avenue LORNE, VIC

 5

 3

 5

CONTEMPORARY COASTAL LIVING

Presenting as new, this luxurious family home set over three levels, sleeps 12 people. Comprising 5 queen bedrooms complete with BIR's, 3 bathrooms, powder room, open plan kitchen dining lounge area and a rumpus room.

External tiled terrace or timber decks to each level.

The property has expansive views of Loutitt Bay and the iconic Lorne Pier.

Only minutes to the swing bridge, beach and entrance into Lorne's town centre with landscaped gardens and a secure back yard.

Solid spotted gum flooring and stairs, euro appliances, Caesar stone benchtops throughout, motorised blinds, split systems to each level too many additional features to mention. Effortless vehicle access with direct entry into the property.

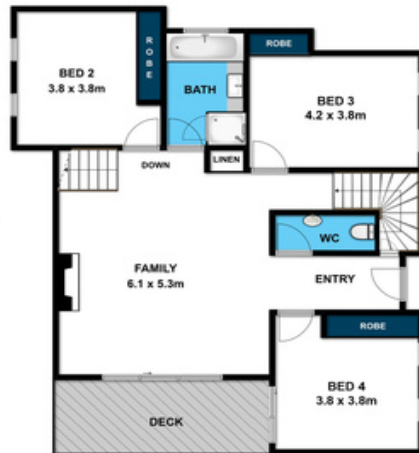
Price: \$1,495,000

Tyrone Provan
0405 124 799

Michael Coutts
0438 356 624



GROUND FLOOR PLAN



FIRST FLOOR PLAN



SECOND FLOOR PLAN

Whilst bwrn.com.au has made every attempt to ensure the accuracy of the floor plan contained here, measurements are approximate and no responsibility is taken for any error, omission, or mis-statement. This plan is for illustrative purposes only.

7 Waverley Avenue

Lorne