



8A Wray Street ANGLESEA, VIC



THE LOVE SHACK

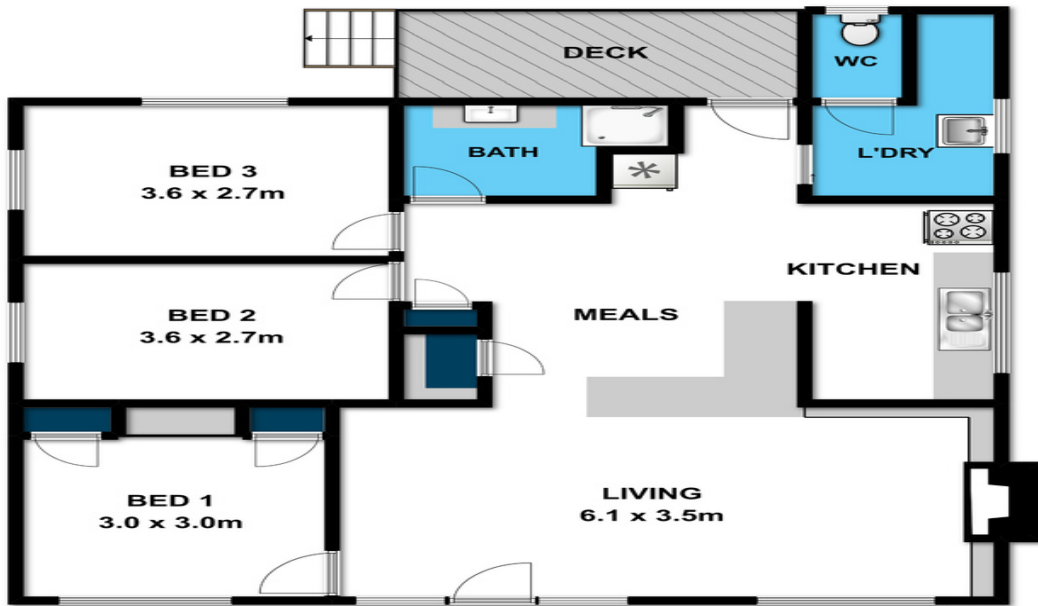
The Love Shack, Is a little old place where you can get together! Enjoy it with friends, family or just chill out & embrace the peace on your own. This cute beach shack has a great feel and is a fantastic package, offering an excellent entry point into the coastal real estate market for a price that is just a bit more than the land value! This style of home is fast becoming the last of the original Australian sea side holiday properties. With hardwood floors throughout and an open plan living with open fire place, it has features that can be further enhanced or simply embrace it for a few years and plan to do something more substantial in the future. There are 3 bedrooms, kitchen flowing onto a dining space. Bathroom & separate laundry and toilet. The land size is approx. 400 sqm with the front facing directly north for beautiful warmth and sunshine. Being located in prime position for walking to the river, shops and paths to the beach, this very convenient position will be a positive investment for many years to come. Be quick to secure this little diamond in the rough.

Price: \$570,000

Nicole Spiteri

Ben Jackson

0437 380 706



Whilst bwrn.com.au has made every attempt to ensure the accuracy of the floor plan contained here, measurements are approximate and no responsibility is taken for any error, omission, or mis-statement. This plan is for illustrative purposes only.



8a Wray Street

Anglesea