



20 Bachli Court ANGLESEA, VIC



3



2



4

## PRIVATE HIDEAWAY!

Located right on the corner of Bachli Court and Belton Street, this fantastic block of approx. 1000 sqm has loads of space and a picturesque outlook over the bush & trees. A lovely split level designed home with a high timber cathedral style ceiling in the open plan kitchen, dining and living room. A huge separate laundry located next to the kitchen could be transformed to either further enhance the living area or create a walk in pantry & laundry. The main entertaining level is surrounded by decking, offering the option of whether to sit in north facing sunshine and fresh air or simply enjoy the serenity from inside the house. With loads of glass windows it's easy to feel a part of the environment. The orientation of the house is private & secluded with the feeling of no overlooking from neighbours. In the cooler months the central wood heater adds warmth to the entire house. The upstairs hosts the master bedroom with walk in robe and ensuite plus a private balcony, weekends with breakfast in bed and views over the bush make relaxing a breeze! A further 2 bedrooms are also conveniently on this floor, one is large enough to be easily converted into a second living space or split to create an extra bedroom! The second bathroom and separate toilet are positioned perfectly for access to the bedrooms. There is generous storage space.

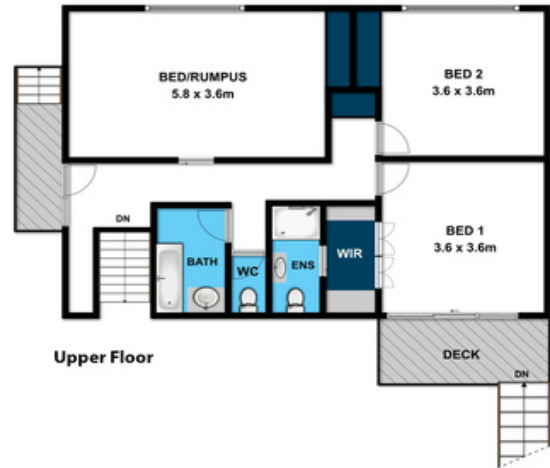
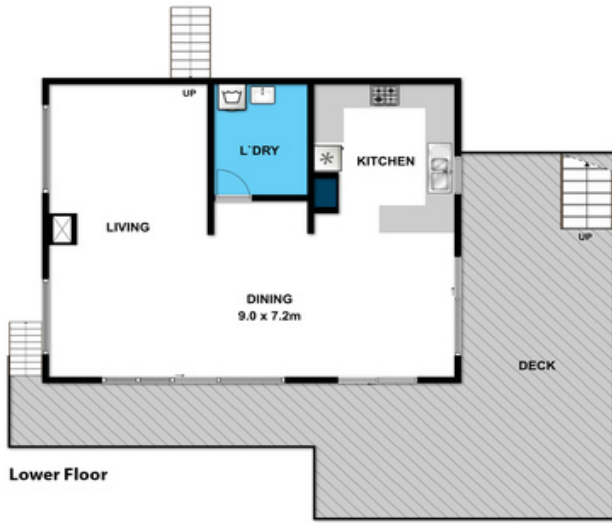
**Price:**

\$750,000

**Nicole Spiteri**

**Ben Jackson**

0437 380 706



Whilst [bwrm.com.au](http://www.bwrm.com.au) has made every attempt to ensure the accuracy of the floor plan contained here, measurements are approximate and no responsibility is taken for any error, omission, or mis-statement. This plan is for illustrative purposes only.



20 Bachli Court

Anglesea