



8 Heath Street LORNE, VIC

 4  3  6

SOUL, SECLUSION & SEA!

Rarely does a home exude the character, charm and beauty of this mud brick classic. As you enter, the tree-filled bush view on one side, French provincial-influenced courtyard on the other and commanding sea view ahead tells you this is something special.

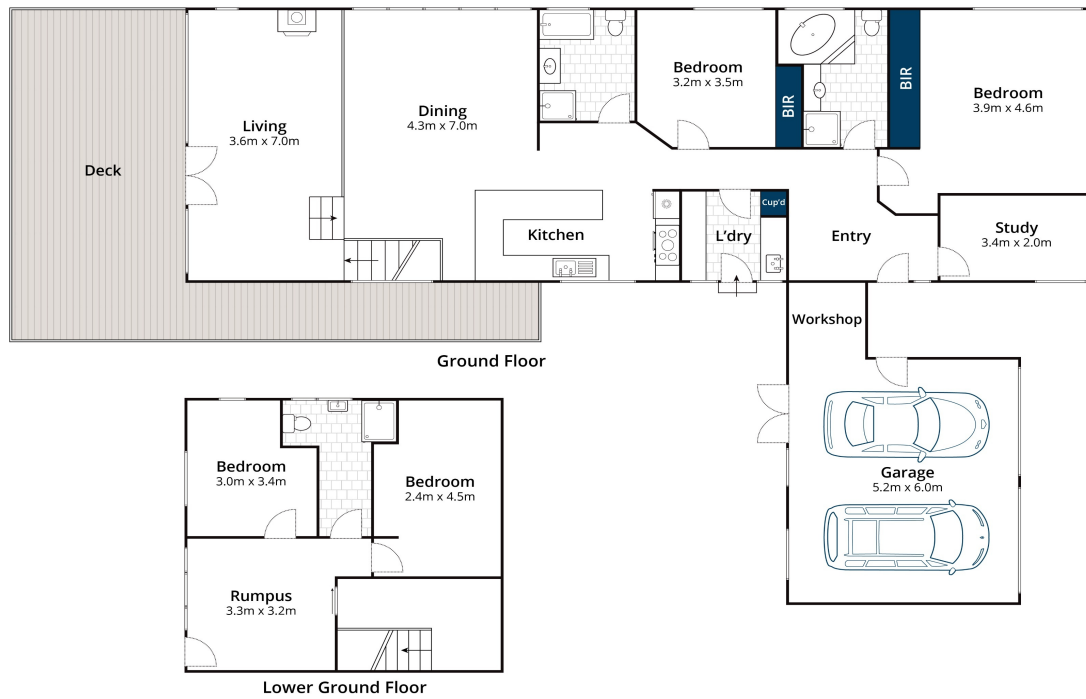
The cleverly designed two-level residence accommodates two separate zones for large or multiple family living while retaining a feeling of soul that defies its size. The upper level flows from master bedroom with ensuite and spa, second bedroom, study and open kitchen/living/dining area out to the extensive ocean-facing deck.

Separation is provided for those in need with a further two bedrooms, living and bathroom in the privacy of the lower level. Sited on a large allotment with the fascinating wild life enjoying it with you, this property's distinctive feeling is pure Lorne.

Price: \$1,325,000

Ian Stewart
0418 522 571

Karen Stribling
0439 650 838



Approx. Area 201m²

Whilst bwrn.com.au has made every attempt to ensure the accuracy of the floor plan contained here, measurements are approximate and no responsibility is taken for any error, omission, or mis-statement. This plan is for illustrative purposes only.



8 Heath Street, Lorne