



10 Skyline Court Lorne, VIC

 4  3  2

SERENITY AND SPACE ON SKYLINE

Luxuriously appointed, architecturally designed, 4 bedroom family beach residence exemplifying quality craftsmanship whilst set amongst a privately secluded natural environment with state reserve at the back door.

Impressive open plan living, dining, kitchen with Euro appliances and chefs larder. The lounge area has a roaring open fire and opens onto 2 expansive decks, facing north and south allowing you to follow the sun all day.

Rumpus and store rooms downstairs plus double garage and laundry make this a feature packed house accommodating the largest of families.

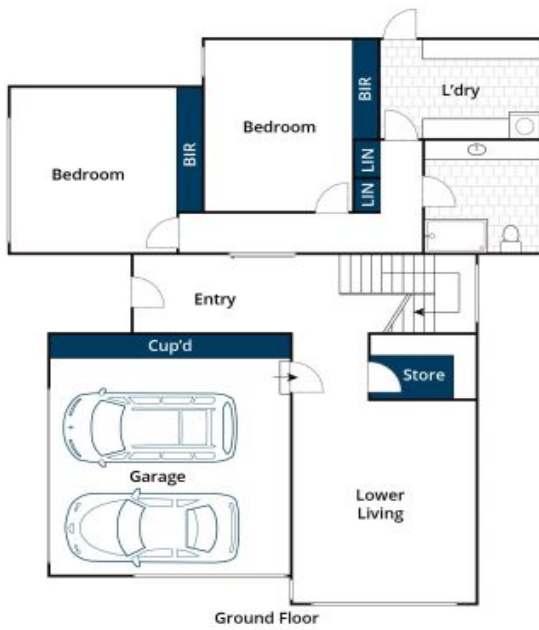
Featuring soaring high ceilings, polished concrete and hardwood floors, under slab heating

Karen Stribling

0439 650 838

Michael Coutts

0438 356 624



Whilst www.bwrm.com.au has made every attempt to ensure the accuracy of the floor plan contained here, measurements are approximate and no responsibility is taken for any error, omission, or mis-statement. This plan is for illustrative purposes only.



10 Skyline Court, Lorne