



5 Alsop Street Lorne, VIC



3



2



2

MISTY VIEW

Designed by renowned architect Andy Sprogis, 'Misty View' is an elegant family home which brings the outside in. Andy's designs are noted for his excellent use of space and light and this property is no exception. Set high on a deep block amidst the towering blue gums, it commands sweeping coastal views. Spectacular open kitchen / dining / living zones flow onto the private north facing elevated deck, ideal for easy entertaining. Polished Jarrah floors, expanses of glass, Miele and Bosch appliances and Jindara wood heater combine beautifully to promote an aura that is uniquely Lorne. The master bedroom, also enjoying a panoramic vista, and upstairs bathroom complete the upper level. Downstairs, a further two bedrooms, playroom/teenagers' retreat, family bathroom and laundry make this a highly flexible home for families at any stage of life. Double off street car bay and associated pathways tastefully complete this charming Lorne home.

Price:

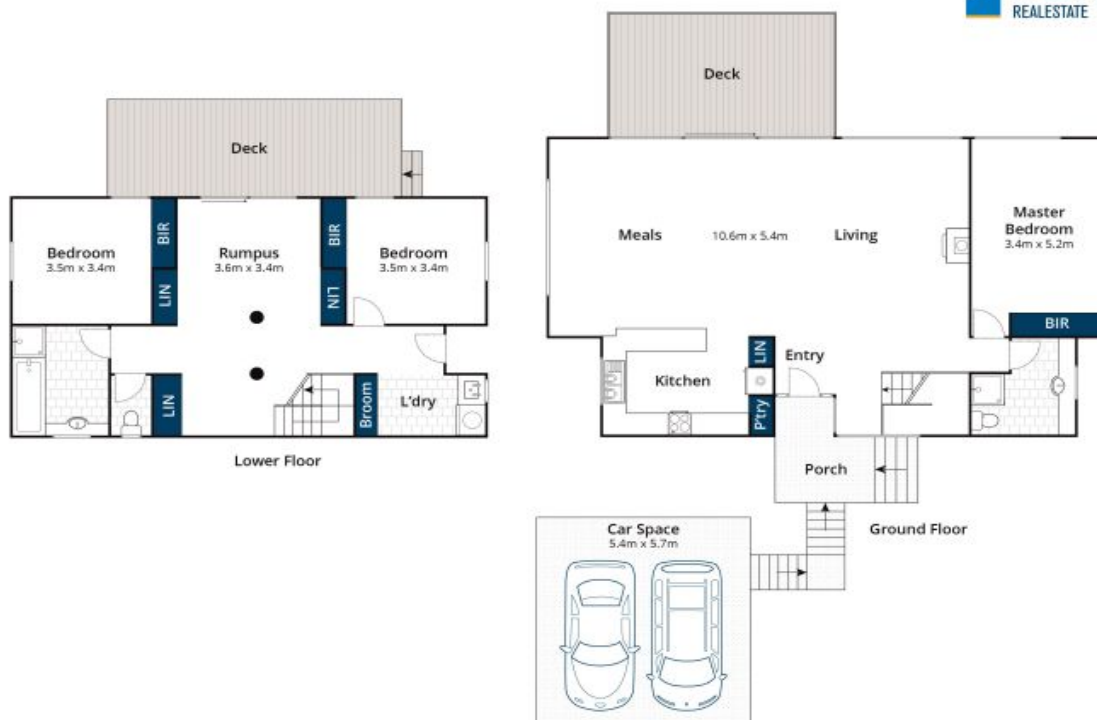
\$1,590,000

Ian Stewart

0418 522 571

Karen Stribling

0439 650 838



Whilst bwrm.com.au has made every attempt to ensure the accuracy of the floor plan contained here, measurements are approximate and no responsibility is taken for any error, omission, or mis-statement. This plan is for illustrative purposes only.

5 Alsop Street, Lorne