



2/7 Toorak Terrace Lorne, VIC



4



2



4

ARCHITECTURALLY STRIKING PANORAMICALLY BRILLIANT!

A stunning Mark Gratwick designed low maintenance easy living residence with a spectacular elevated outlook. Featuring expanses of glass, polished timber floors, feature stonework and a wrap around sky deck.

This prestige residence features 4 spacious bedrooms (WIR and ensuite to master), open kitchen/dining, zoned living space with open fire and quality fittings and finishes in all areas.

Year round comfort is further enhanced with open fire, multiple ceiling fans, reverse cycle heating/cooling and glass sliding doors bringing the outside in.

The spacious elevated outdoor dining and lounging space is an absolute highlight while the double lockup garage and tasteful low maintenance landscape complete this class act!

Price:

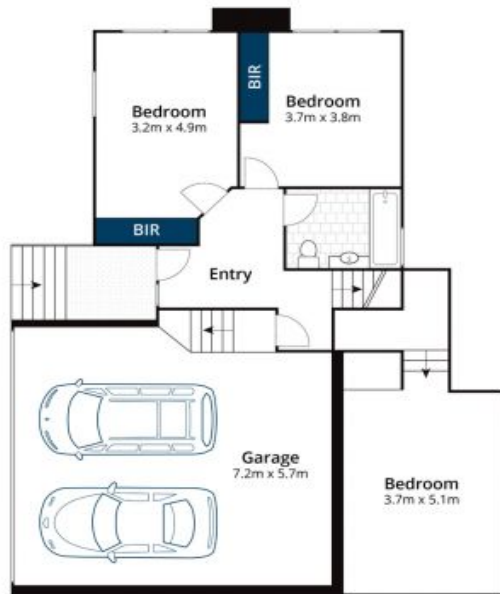
\$1,395,000

Ian Stewart

0418 522 571

Tyrone Provan

0405 124 799



Ground Floor



First Floor

Whilst bwrn.com.au has made every attempt to ensure the accuracy of the floor plan contained here, measurements are approximate and no responsibility is taken for any error, omission, or mis-statement. This plan is for illustrative purposes only.

7 Toorak Terrace, Lorne