



17 Moorhouse Street Lorne, VIC



## FUNCTIONAL FAMILY SIZED OPPORTUNITY IN CENTRAL LOR...

Located in a highly desired central pocket of town on the low side of Moorhouse Street is this unassuming single level, 5-bedroom family home.

Enter through the under-cover carport and into the open plan kitchen, living, dining area opening to outdoor deck space. With the property's ideal north east orientation, you are blessed with ocean views all the way to the Aireys Inlet Lighthouse and plenty of all-day sunshine.

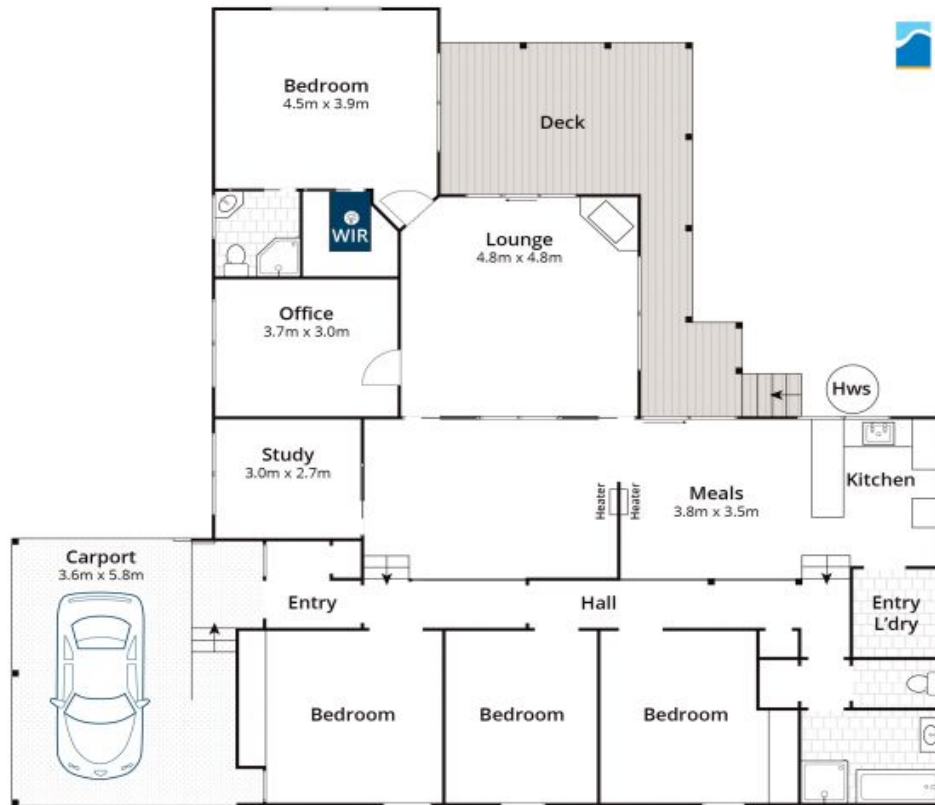
With the floorplan lending itself to suit the larger family and appealing to those who are looking to add their own personal touches, improve or increase what already exists (STCA). The property boasts 5 bedrooms, plus separate study, master bedroom with ensuite and WIR opening to deck space.

**Ian Stewart**

0418 522 571

**Michael Coutts**

0438 356 624



Approx. Area 181m<sup>2</sup>

Whilst [bwrn.com.au](http://bwrn.com.au) has made every attempt to ensure the accuracy of the floor plan contained here, measurements are approximate and no responsibility is taken for any error, omission, or mis-statement. This plan is for illustrative purposes only.

## 17 Moorhouse Street, Lorne