



5/5-7 Hartley Street Aireys Inlet, VIC



## THE PERFECT BEACH SIDE BOLTHOLE

Properties for sale in this price range and on the beach side of the Great Ocean Road are becoming increasingly rare.

**Price:** 750000

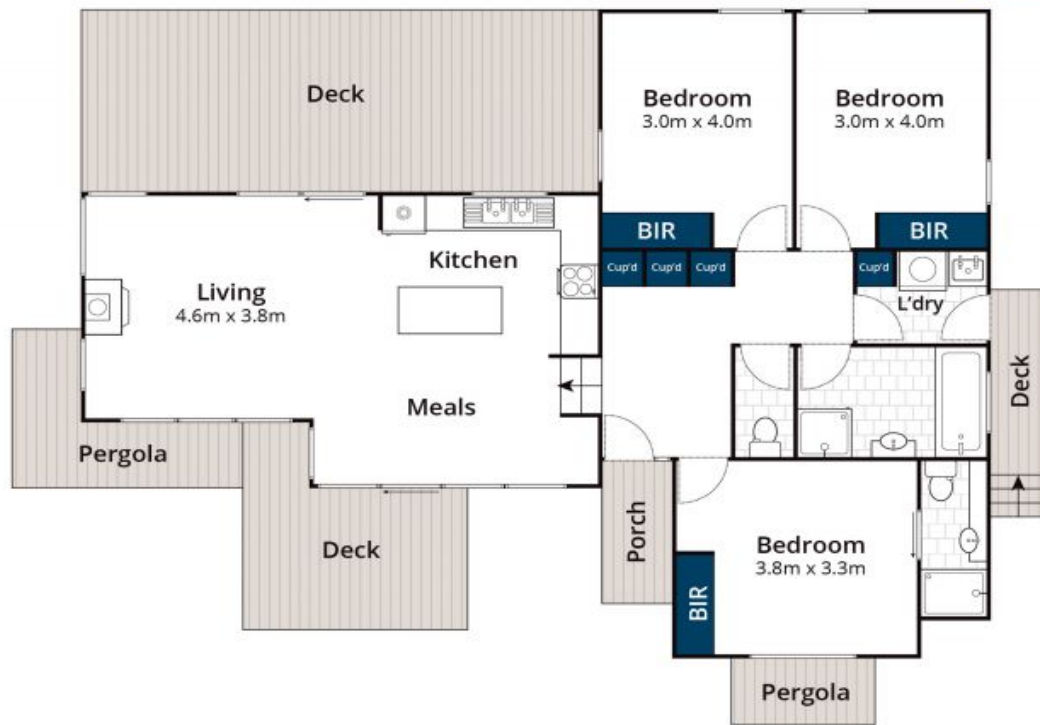
Add to this, the fact that this perfect beach house comprises three well sized bedrooms, main bathroom and ensuite and all set on a low maintenance manageable allotment. With open plan living/dining/kitchen all with a bright northern orientation and warmed by a wood heater as well as r/c air conditioning.

Within a short walk of two beaches, the general store, cafes, pub, school and all Aireys Inlet has to offer.

The much sought after idea of a 'lock and leave' coastal escape is hard to attain under \$1m in this area now and we don't believe this little ripper will last long.

**James Worssam**  
0418 585 815

**Ben Jackson**  
0437 380 706



Approx House Area 99m<sup>2</sup>

Whilst [bwrn.com.au](http://bwrn.com.au) has made every attempt to ensure the accuracy of the floor plan contained here, measurements are approximate and no responsibility is taken for any error, omission, or mis-statement. This plan is for illustrative purposes only.



## 5/5-7 Hartley Street, Aireys Inlet