



5/5-7 Hartley Street Aireys Inlet, VIC



THE PERFECT BEACH SIDE BOLTHOLE

Properties for sale in this price range and on the beach side of the Great Ocean Road are becoming increasingly rare.

Price: 750000

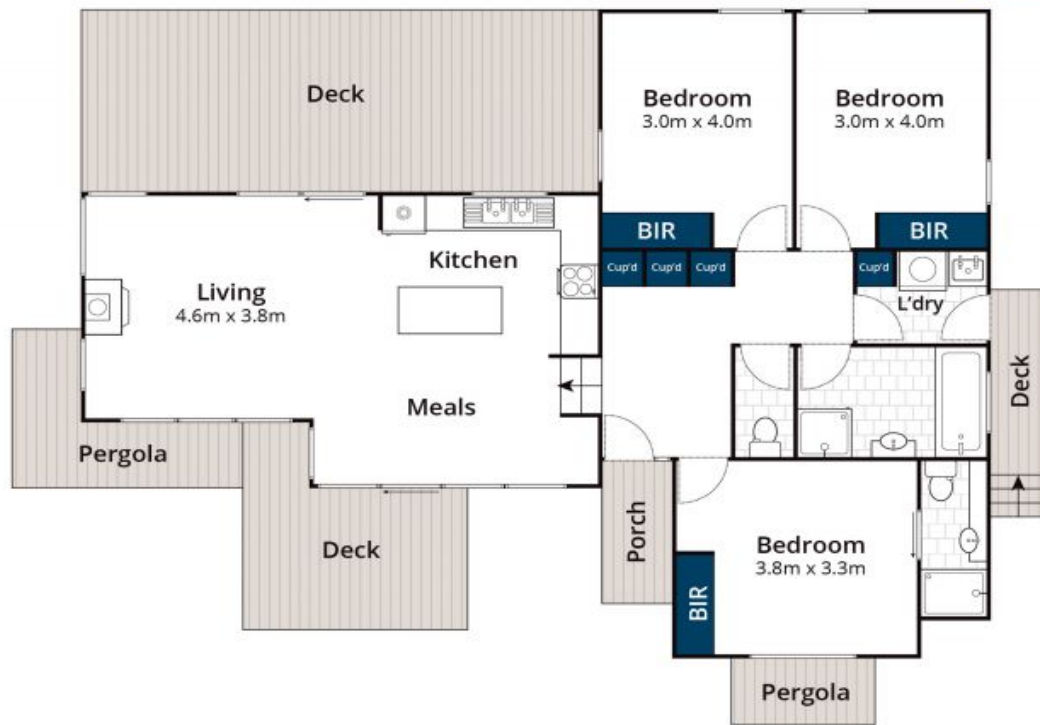
Add to this, the fact that this perfect beach house comprises three well sized bedrooms, main bathroom and ensuite and all set on a low maintenance manageable allotment. With open plan living/dining/kitchen all with a bright northern orientation and warmed by a wood heater as well as r/c air conditioning.

Within a short walk of two beaches, the general store, cafes, pub, school and all Aireys Inlet has to offer.

The much sought after idea of a 'lock and leave' coastal escape is hard to attain under \$1m in this area now and we don't believe this little ripper will last long.

James Worssam
0418 585 815

Ben Jackson
0437 380 706



Approx House Area 99m²

Whilst bwrn.com.au has made every attempt to ensure the accuracy of the floor plan contained here, measurements are approximate and no responsibility is taken for any error, omission, or mis-statement. This plan is for illustrative purposes only.



5/5-7 Hartley Street, Aireys Inlet