

ACTUAL VIEW



ACTUAL VIEW



27 Hopetoun Terrace Lorne, VIC



3



2



2

ARGUABLY LORNE'S MOST EXPANSIVE VIEWS

Striking uninterrupted 180 degree panoramic views of all that is truly Lorne ? and more! Breath-taking view of the surfing point to the Pier, the famous swing bridge and Erskine river mouth, the stunning coastline to Aireys Inlet Lighthouse, and the uninterrupted horizon with first glimpses of the rising sun.

This 3-bedroom two-level brick residence features an open kitchen/living/dining zone and master bedroom all with expansive views, second double bedroom, bathroom and laundry on the upper level with direct undercover same level access and a further bunk/rumpus room with kitchenette and bathroom on the lower ocean-facing level with optional external entry.

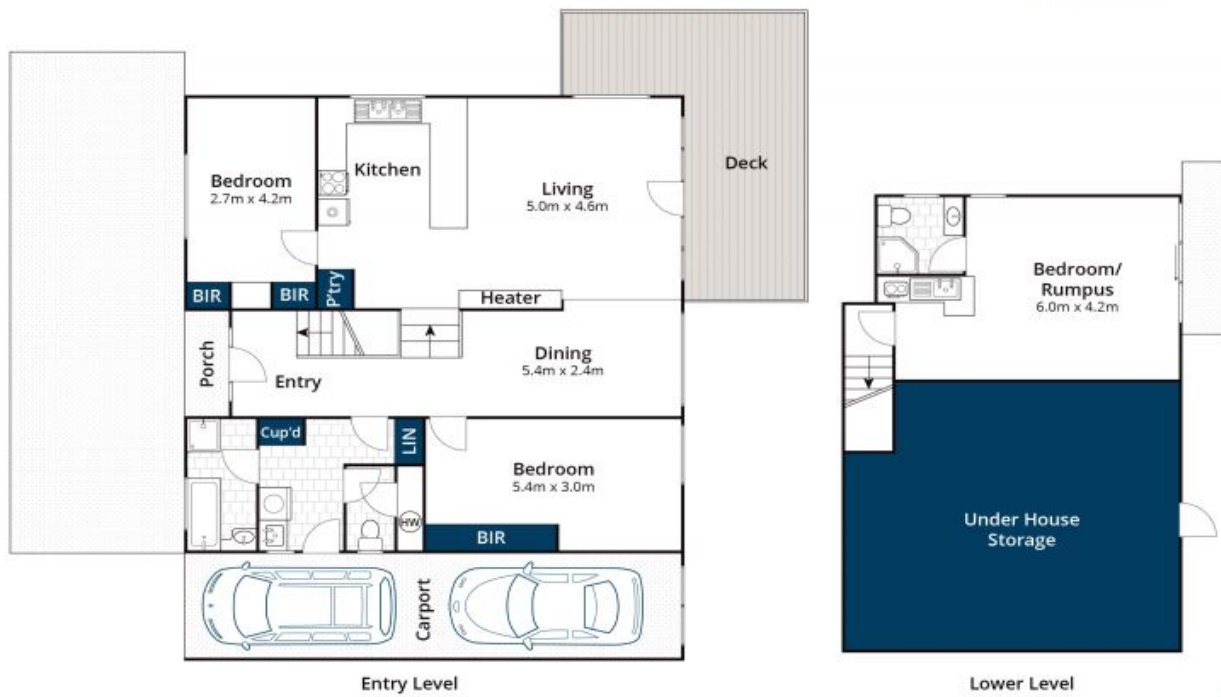
A spectacular site in two certificates of title totalling 1,010 square metres presenting multiple opportunities (STCA). Move in now to this solid home, renovate or rebuild in the heart of Lorne. Check out the height of the surf from your living room before you walk to the beach. The enormity of the jaw dropping outlook gives any option the wow factor.

Ian Stewart

0418 522 571

Karen Stribling

0439 650 838



Approx House Area 179m²

Whilst bwrn.com.au has made every attempt to ensure the accuracy of the floor plan contained here, measurements are approximate and no responsibility is taken for any error, omission, or mis-statement. This plan is for illustrative purposes only.



27 Hopetoun Terrace, Lorne