

19/260 Mountjoy Parade Lorne, VIC



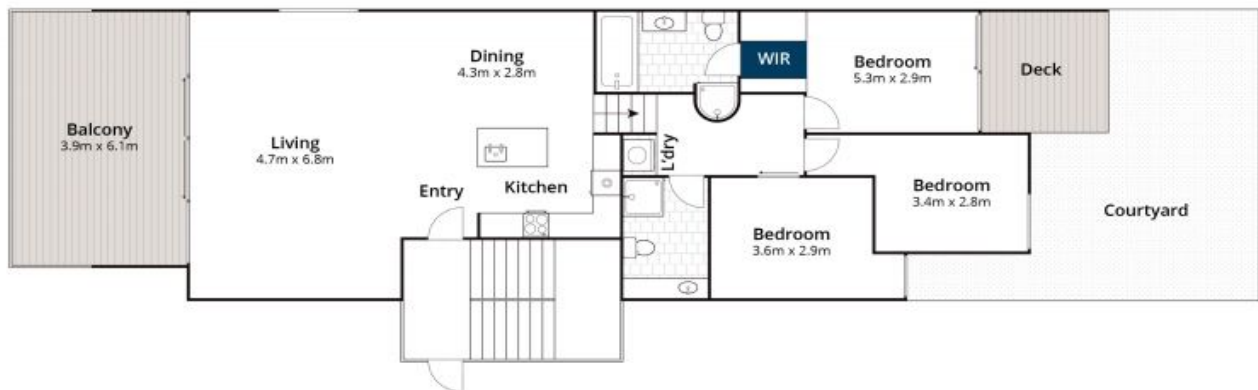
THE MAGIC OF KALIMNA TERRACES

The waters edge Kalimna apartment building in the premium North facing precinct of Lorne has always been keenly sought after for good reason. The position is ideal being tucked into the hillside and protected from the weather with glorious Northern views of the coastline as it stretches out to split point and beyond. Step over the road and you can stroll to the left along the gently undulating coastal path to town and the surf club or wander to the pier on the right. Only apartments on this second level in the rear building have all 3 desired features of a large balcony facing the ocean view, a lock up garage with an additional parking space, and a good sized rear courtyard. The internal spaces are well designed with the spacious open plan kitchen/living/dining area opening to the entertaining deck and facing the ocean. The master bedroom has full glass sliding doors to the rear courtyard and a luxury ensuite complete with a bath that provides a view to the water. Both the other bedrooms have windows to the courtyard and are serviced by a central bathroom. The apartment has been tastefully updated by the current owner with quality oak flooring, grey carpet and whisper white paint throughout. Add to this the low owners corporation fees and minimal maintenance required it is no wonder these apartments are so popular.

Price: \$955,000

Craig Willmott
0487 389 620

Michael Coutts
0438 356 624



Approx House Area 117m²

Whilst bwrn.com.au has made every attempt to ensure the accuracy of the floor plan contained here, measurements are approximate and no responsibility is taken for any error, omission, or mis-statement. This plan is for illustrative purposes only.

19/256-260 Mountjoy Parade, Lorne