



8 Holmwood Avenue Anglesea, VIC



### Positioned Perfectly for Easy Living!

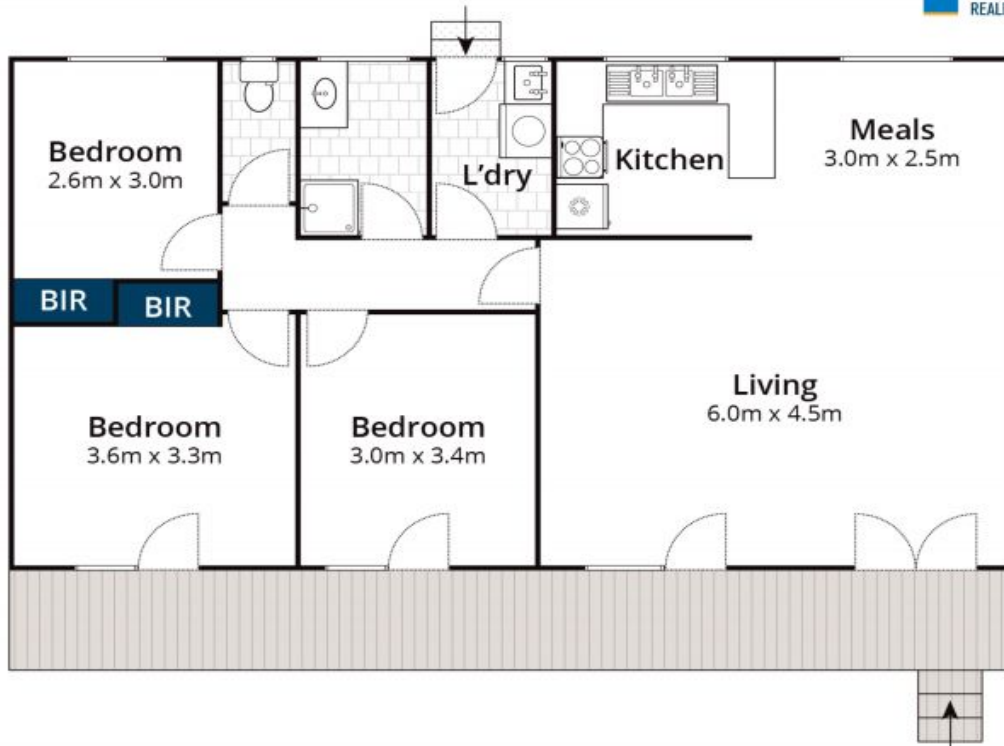
Prime Anglesea location, this single level property is a gorgeous traditional cottage style beach house, with a warm and cosy ambience throughout. Perfectly positioned on a lovely gravel road, it's tucked away privately in a highly sought after pocket with an easy walk to main beach and the river at the end of the street. Holmwood Avenue is blocked off in the middle, making it inaccessible as a through road, the feel of the position is like an old country road and the house itself is surrounded by a sweet garden, with filtered light through the beautiful trees tops.

**Price:** \$880,000

**Nicole Spiteri**

**Ben Jackson**

0437 380 706



Approx House Area 90m<sup>2</sup>

Whilst [www.bwrm.com.au](http://www.bwrm.com.au) has made every attempt to ensure the accuracy of the floor plan contained here, measurements are approximate and no responsibility is taken for any error, omission, or mis-statement. This plan is for illustrative purposes only.

## 8 Holmwood Avenue, Anglesea