



8 Butterworth Crescent Anglesea, VIC



3



1



2

## Sweet, Conveniently Positioned Beach House!

### UNDER CONTRACT!

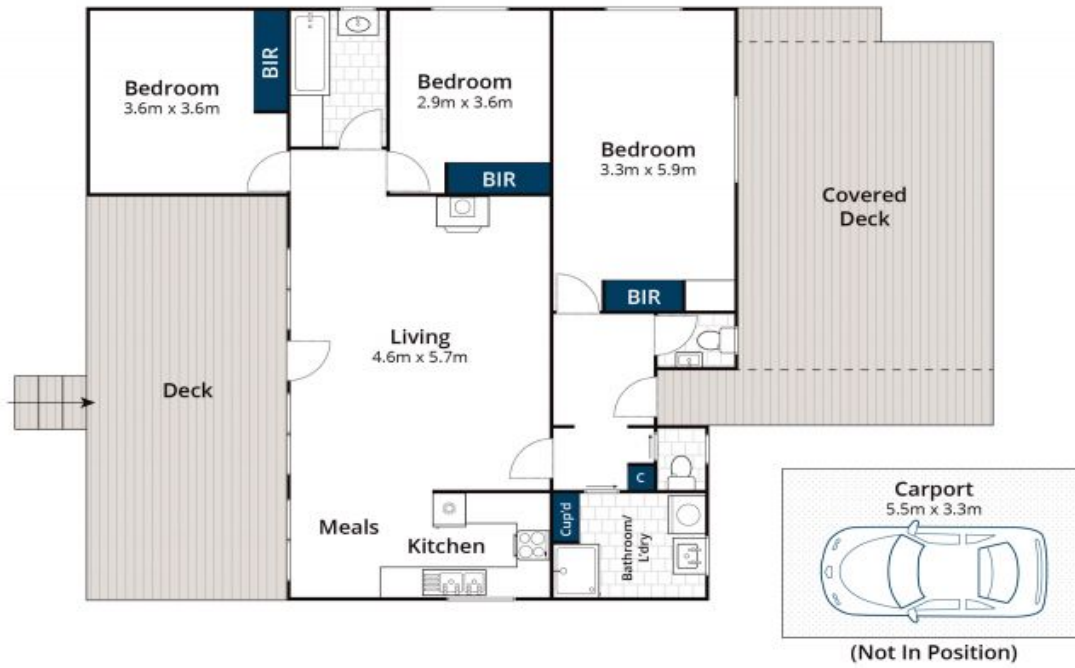
This sweet single level 60's style home has beautiful hardwood floors throughout and lovely large windows at the front drawing in an abundance of light. With the house being well set back from the street, there is a sense of privacy. A gorgeous garden & pathway leads to a large front entertaining deck with sun shades for protection, a wonderful position to capture warmth and entertain. Upon entering the front door, there is a bright living room with a brand new gas heater for keeping the house cosy in the cooler months. A compact updated kitchen and dining area is perfect for casual beach living. There are two bedrooms with built in robes with a central bathroom in between both, positioned at the front of the house. A further large third bedroom / rumpus room is located separately which is a great retreat for families. There is a convenient second bathroom / laundry and 2 individual toilets. Out the back is a large alfresco decked area, which is undercover for enjoying all year round. A well maintained surrounding garden is enclosed with secure fencing, great for pets or children. The house has a retro feel and is perfectly set up for anyone wanting to move in start enjoying the property straight away, with potential scope for updates down

**Price:** \$860,000

**Nicole Spiteri**

**Ben Jackson**

0437 380 706



Approx House Area 103m<sup>2</sup>

Whilst [www.bwrm.com.au](http://www.bwrm.com.au) has made every attempt to ensure the accuracy of the floor plan contained here, measurements are approximate and no responsibility is taken for any error, omission, or mis-statement. This plan is for illustrative purposes only.

## 8 Butterworth Crescent, Anglesea