



17 Pickworth Drive Anglesea, VIC



## SUNRISE TO SUNSET!

Elevated high on the hill, this position on Pickworth Drive showcases the stunning 180-degree aspect of Anglesea including the golf course, national park and coastline to Point Addis. Watch the sunrise in the morning from the east and follow the sun moving around to the west for sunset. This double storey home is a fantastic beach house filled with warmth and excellent spaces. The glass windows and sliding doors invite the outdoors in, the entertaining decks provide a perfect place to relax and unwind. With such a wonderful outlook it's easy to sit and daydream whilst watching the incredible landscape constantly unfold throughout the seasons. A lovely open plan kitchen, dining and casual living space with a central wood fire is cosy for the cooler months. The upper level has 3 excellent bedrooms, one with a beautiful window to the coastline. A bathroom, separate toilet and laundry are also on this level for convenience. Downstairs hosts a bedroom / living space with second bathroom. There is a second entertaining deck providing dual spaces for family and friends to enjoy. Extra features include under cover parking for multiple cars, under house lock up storage and a brilliant backyard perfectly set up for kids to enjoy their very own playground. Land size approx. 1071sqm.

**Price:** \$900,000

**Nicole Spiteri**

**Ben Jackson**

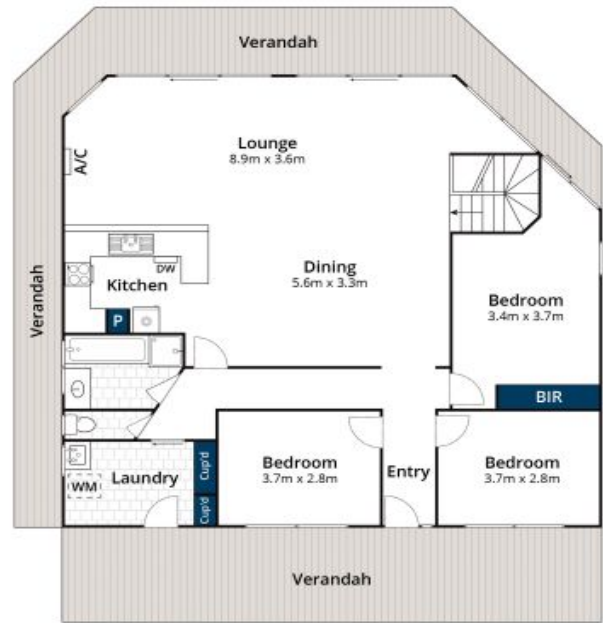
0437 380 706



Lower Ground Floor



( Not In Position )



Ground Floor

Approx House Area 177m<sup>2</sup>

Whilst [bwrn.com.au](http://bwrn.com.au) has made every attempt to ensure the accuracy of the floor plan contained here, measurements are approximate and no responsibility is taken for any error, omission, or mis-statement. This plan is for illustrative purposes only.



## 17 Pickworth Drive, Anglesea