



29 Belvedere Terrace Lorne, VIC



POSITIONED BETWEEN A SWIM OR A ROUND OF GOLF

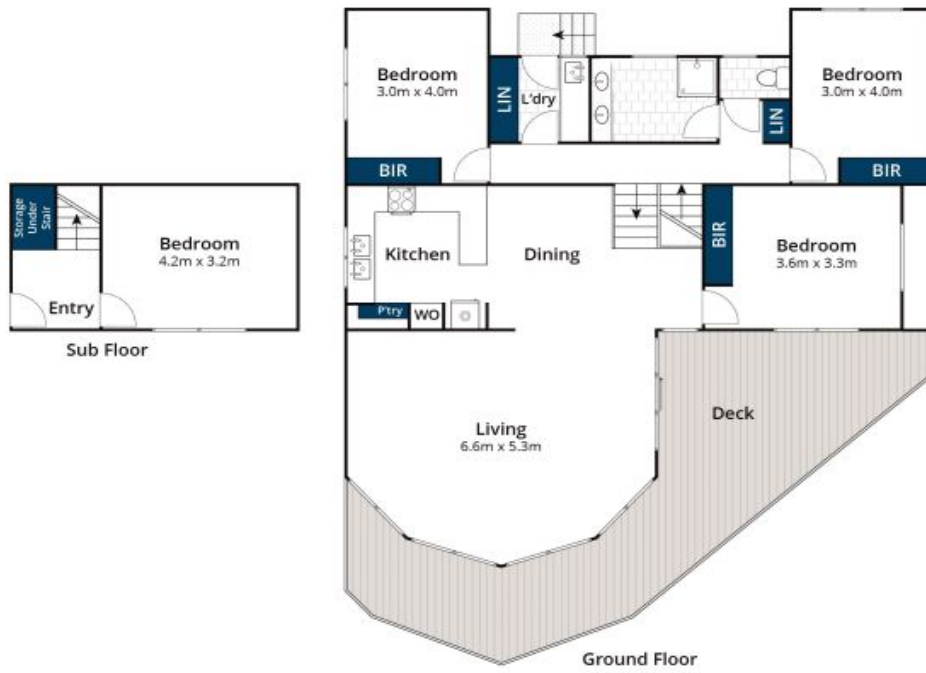
This family property is ideally located on a large corner allotment of approx. 780sqm, set amongst the majestic gums, adding to its tranquil ambience.

Price: \$1,125,000

The property boasts 4 bedrooms (master on upper level) and central bathroom. Set over 3 levels, the upper level comprises of large, open plan functional kitchen, comfortable living and dining space boasting a wood fire and plenty of natural light from the high use of glass. Large outdoor deck space perfect for entertaining and taking in the filtered ocean outlook.

Karen Stribling
0439 650 838

Michael Coutts
0438 356 624



Approx House Area 136m²

Whilst bwrn.com.au has made every attempt to ensure the accuracy of the floor plan contained here, measurements are approximate and no responsibility is taken for any error, omission, or mis-statement. This plan is for illustrative purposes only.



29 Belvedere Terrace, Lorne