



10 Little Street Anglesea, VIC



4



2



2

## CLIFF EDGE & CRASHING WAVES

At this time of year, is there anything more beautiful than capturing the fullness of the afternoon sunshine and warmth, whilst being mesmerized by ocean views and crashing waves. This unique and special property has absolute prime position being located right on the edge of nature reserve and the cliff edge of Anglesea. One of the largest entertaining decks to embrace and relish the amazing ocean views of Main beach right around to Point Roadknight.

It's not often a property can offer views, privacy, and proximity however this one does. A lovely 'little' no through road, ensure its stays quiet and serene with the ability to stroll easily to the shops to get all you need without having to get in the car. If you love walking, the tracks are literally only one step away, you can go through to Point Addis or on the sand to the waters edge.

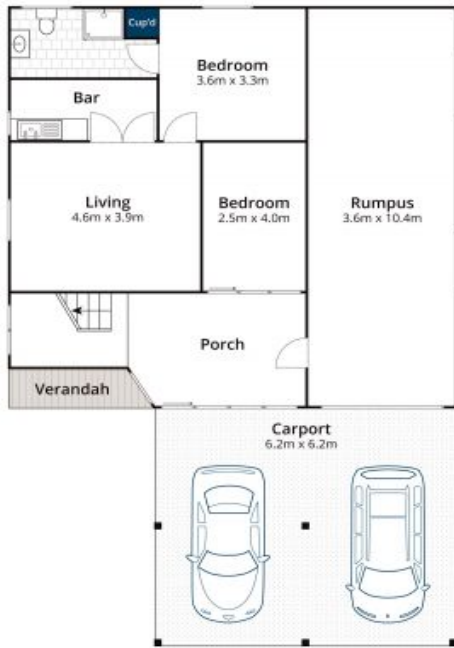
**Price:** \$1,291,500

**Kellie Saddington**

0488 980 994

**Ben Jackson**

0437 380 706



Lower Level



Upper Level

Approx House Area 218m<sup>2</sup>

Whilst [bwr.com.au](http://bwr.com.au) has made every attempt to ensure the accuracy of the floor plan contained here, measurements are approximate and no responsibility is taken for any error, omission, or mis-statement. This plan is for illustrative purposes only.



## 10 Little Street, Anglesea