



15 Birralee Road Fairhaven, VIC

 3
  1
  2

BEACHBREAK

Situated only 550 metres from the fabulous Fairhaven surf beach, underpass and surf club. This very comfortable house is sited to receive morning sun into the front of the house and a lovely outdoor undercover entertaining area at the rear to receive the afternoon sun, all the time sheltered from the prevailing winds.

Set on a low maintenance, fully landscaped block of around 600 sqm to allow you can spend more time on the beach than maintaining the garden.

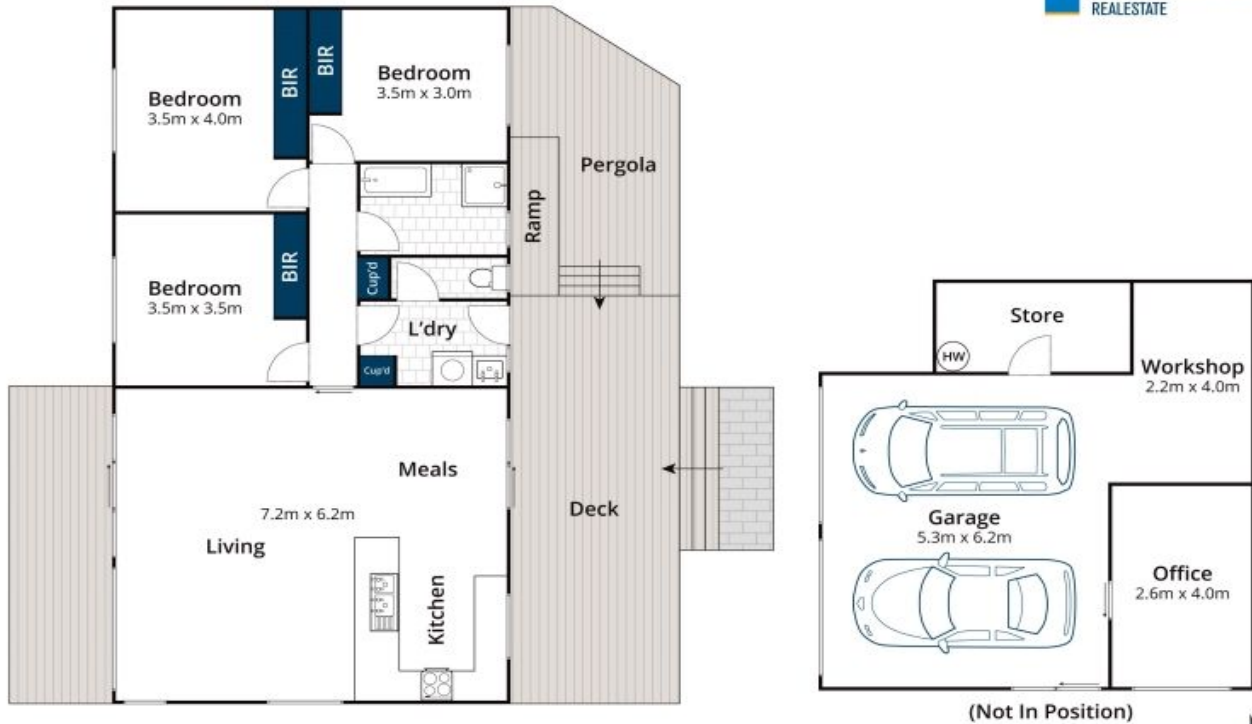
Comprising three double bedrooms all with built in robes and ceiling fans, an open plan kitchen, living and dining area with the comfort of reverse cycle air conditioning as well as a cosy wood heater, whilst enjoying a very pleasant outlook over the treetops.

James Worssam

0418 585 815

Ben Jackson

0437 380 706



Approx House Area 100m²

Whilst bwrn.com.au has made every attempt to ensure the accuracy of the floor plan contained here, measurements are approximate and no responsibility is taken for any error, omission, or mis-statement. This plan is for illustrative purposes only.

15 Birralea Road, Fairhaven