



2/3 Hopetoun Terrace Lorne, VIC



4



2



2

## SLEEK COASTAL ABODE

Architect designed home in an elevated position on the low side of Hopetoun Terrace, providing excellent swing bridge and coastal views.

A multi-level design comprising 4 bedrooms, 2.5 bathrooms, double car garage and multiple living zones indoor and out. The enormous open plan kitchen dining lounge area is impressive with spotted gum flooring, stone benches and artificial gas fire. The property is set on a 528 sqm allotment, beautifully landscaped including a prolific citrus garden of lemons, mandarins and limes.

Finished to the highest level of quality, construction and fit out by renowned builders G.D. Constructions. This home is the ultimate modern, low maintenance getaway or permanent home.

**Price:**

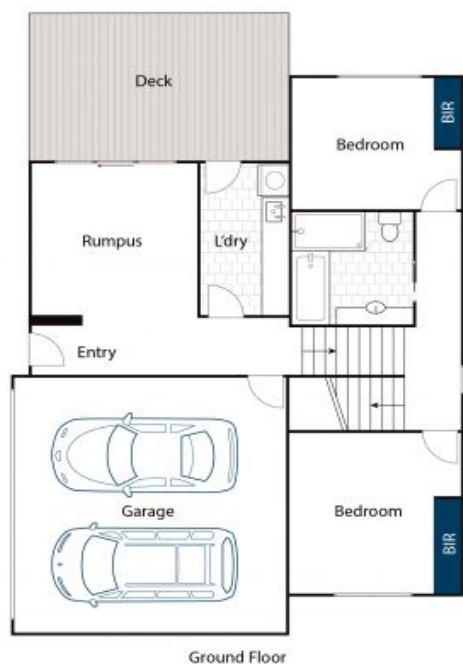
**\$1,650,000**

**Tyrone Provan**

0405 124 799

**Michael Coutts**

0438 356 624



Approx. Area 205m<sup>2</sup>

While [bwrm.com.au](http://bwrm.com.au) has made every attempt to ensure the accuracy of the floor plan contained here, measurements are approximate and no responsibility is taken for any error, omission, or mis-statement. This plan is for illustrative purposes only.



## 2/3 Hopetoun Terrace, Lorne