

1/2A Minapre Street Lorne, VIC



3



1



2

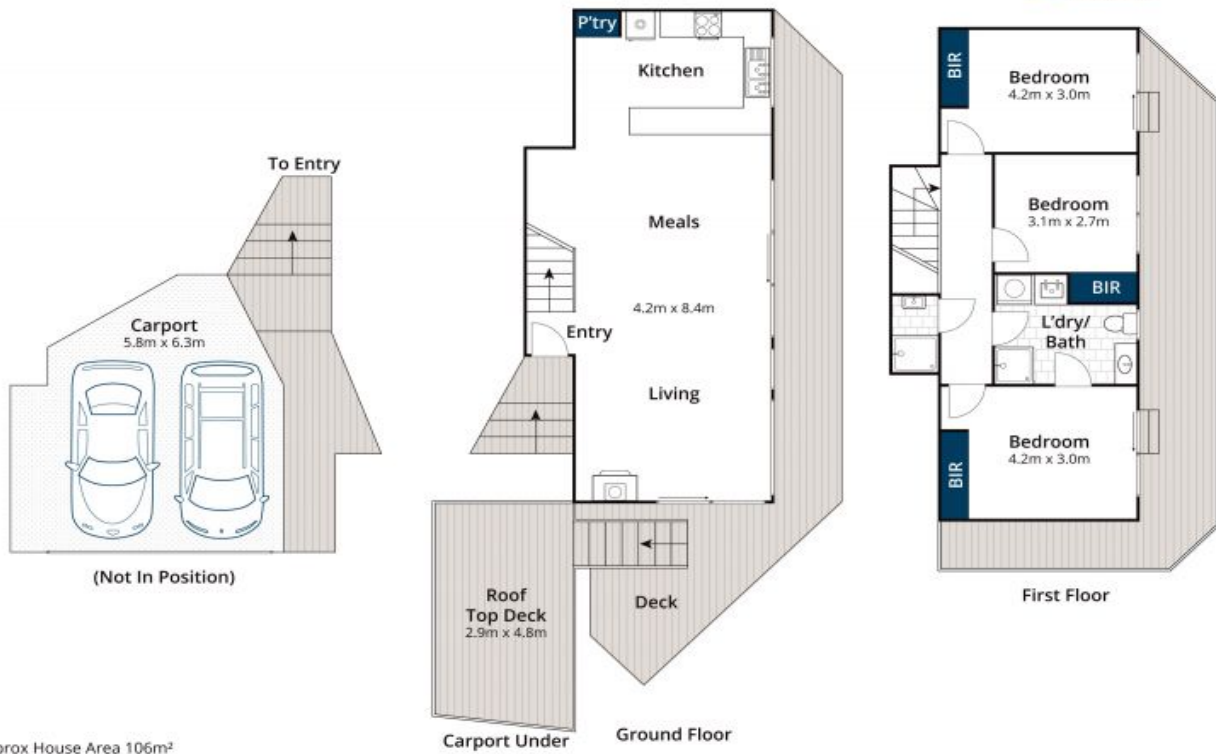
## OUTSTANDING BEACH ACCESS

Situated on a standalone allotment of 274 sqm this beach house is so low maintenance, ensuring that your time in Lorne is pure leisure strolling along the beach or meandering the shopping strip. Comprising three bedrooms, one bathroom and a spacious open plan kitchen dining lounge area which opens onto wrap around decking leading to the rooftop sun deck where you can enjoy sensational views of Louttit Bay. Access to the pure sand of Lorne is an effortless 200 metre stroll via public walkway, across the Great Ocean Road and over the iconic Swing Bridge!

**Price:** \$1,050,000

**Tyrone Provan**  
0405 124 799

**Michael Coutts**  
0438 356 624



Approx House Area 106m<sup>2</sup>

Whilst [bwr.com.au](http://bwr.com.au) has made every attempt to ensure the accuracy of the floor plan contained here, measurements are approximate and no responsibility is taken for any error, omission, or mis-statement. This plan is for illustrative purposes only.

**1/2A Minapre Street, Lorne**