



14A Belvedere Terrace Lorne, VIC



4



2



3

'SURPRISE PACKAGE'

An immaculately presented low maintenance holiday or permanent home with ocean views, great sun and scope to increase the size of the property should you desire.

Comprising 3 bedrooms, one full bathroom plus a second powder room, galley style kitchen adjoining living/dining upstairs.

Downstairs with separate external access is a great sized 4th bedroom perfect for guests or an excellent teenagers retreat. A spacious storage shed backs onto this room.

A fantastic void also exists downstairs and would be easy to further extend and nearly double the floor area of this property STCA.

The ocean facing deck is substantial in size, private and undercover. Other decking descends down to the lower bedroom. Collectively they provide brilliant use of the 407 sqm block and provides you with very little garden maintenance.

Price:

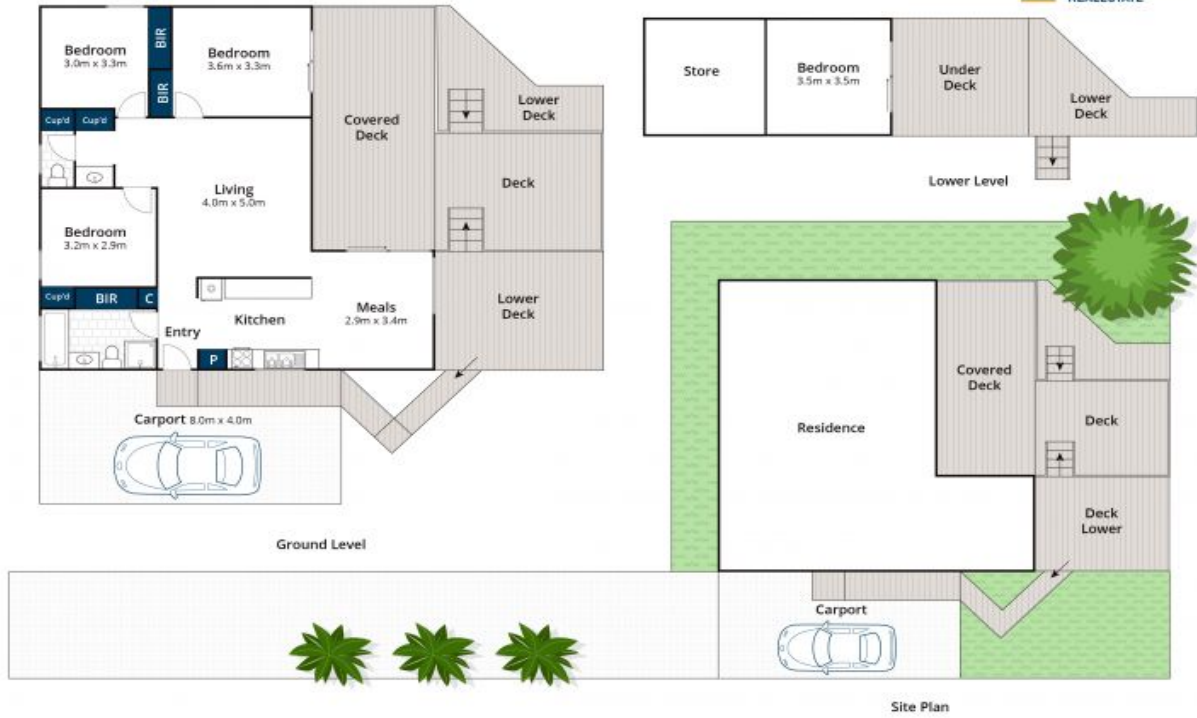
\$940,000

Michael Coutts

0438 356 624

Tyrone Provan

0405 124 799



Approx House Area 106m²
Approx Land Area 407m²

Whilst brm.com.au has made every attempt to ensure the accuracy of the floor plan contained here, measurements are approximate and no responsibility is taken for any error, omission, or mis-statement. This plan is for illustrative purposes only.

14a Belvedere Terrace, Lorne



Approx House Area 106m²
Approx Land Area 407m²

Whilst brm.com.au has made every attempt to ensure the accuracy of the floor plan contained here, measurements are approximate and no responsibility is taken for any error, omission, or mis-statement. This plan is for illustrative purposes only.

14a Belvedere Terrace, Lorne