

1/17 Fern Avenue Lorne, VIC



4



3



2

## "BLUE FERN"

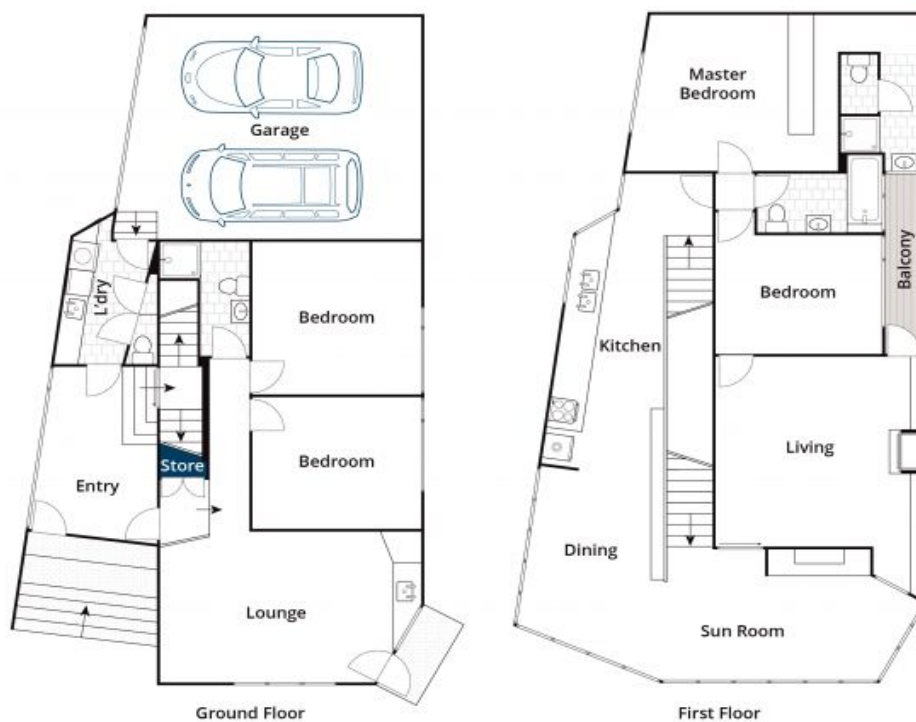
Architect designed and constructed by renowned builder GD Constructions, this modern home exudes a relaxed coastal atmosphere. Approach upstairs via a unique double staircase and arrive into the wraparound living area with breathtaking views to North Lorne and straight out to the ocean horizon.

Created for maximum enjoyment of Lorne's scenic beauty and variable climate, Blue Fern has a versatile floor plan comprising four bedrooms, three bathrooms and multiple living zones. Enjoy relaxing in the sunroom with daybed, drinks from the bar with unique drop-down windows that enhance the views and create year-round comfort, Open dining area and a galley style kitchen with Miele appliances or enjoy the open fireplace in the lounge room.

**Price:** \$2,075,000

**Tyrone Provan**  
0405 124 799

**Ian Stewart**  
0418 522 571



Whilst [brwm.com.au](http://brwm.com.au) has made every attempt to ensure the accuracy of the floor plan contained here, measurements are approximate and no responsibility is taken for any error, omission, or mis-statement. This plan is for illustrative purposes only.

## 1/17 Fern Avenue, Lorne