

\* Indicative boundary only



220 Elington Road Bellbrae, VIC



4



3



3

## DUNLOE - WHERE THE BUSH MEETS THE BEACH

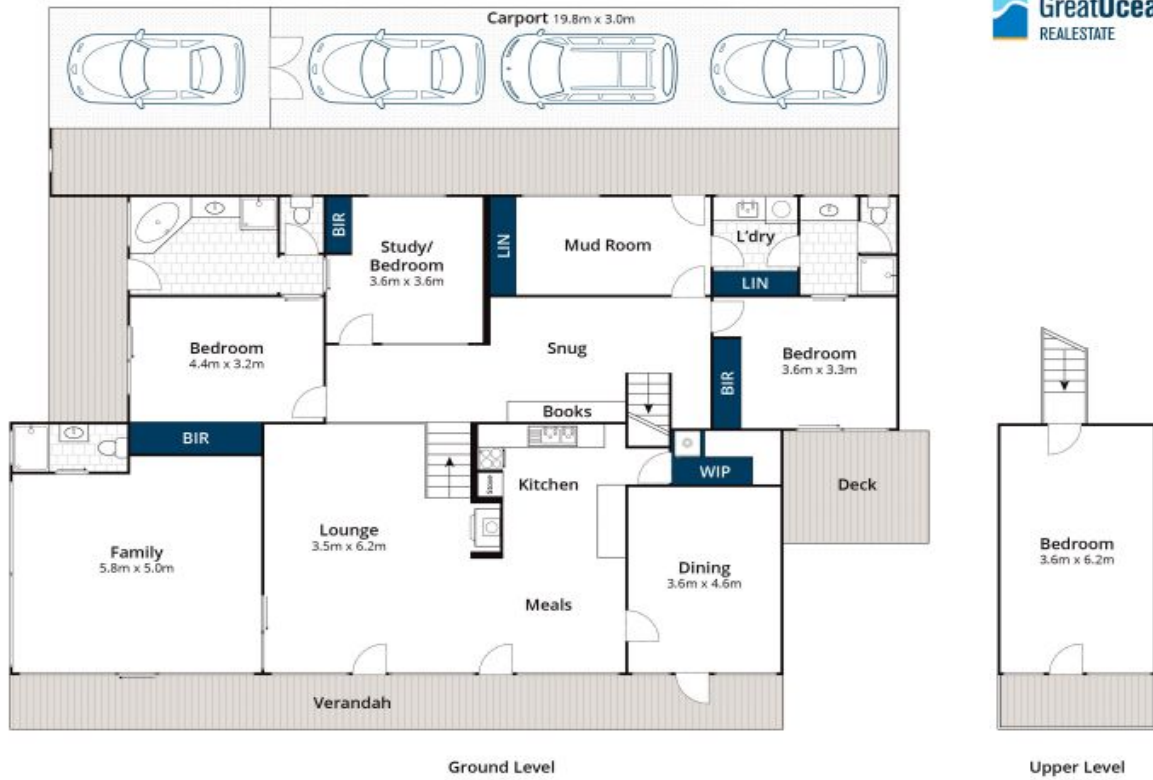
'Dunloe' presents an exceptional opportunity to secure one of the Surf Coasts most substantial and notable landholdings. Held within the same family for over 40 years, this outstanding acreage offers exceptional country living in a highly desirable position.

Boasting endless countryside views, this breathtaking property on approximately 170 acres of beautiful grazing land is truly something special. From the front gates, catch an enticing glimpse of the spectacular vista and lifestyle that awaits at 'Dunloe'. Ideally located just 8km's from the amenity and beaches of Anglesea and Torquay with Bells Beach your local surf spot just 9 minutes by car.

**Price:** \$3,200,000

**Ben Jackson**  
0437 380 706

**Ben Jackson**  
0437 380 706



Approx House Area 237m<sup>2</sup>

Whilst [brm.com.au](http://brm.com.au) has made every attempt to ensure the accuracy of the floor plan contained here, measurements are approximate and no responsibility is taken for any error, omission, or mis-statement. This plan is for illustrative purposes only.

## 220 Elkington Road, Bellbrae

