



47A Harvey Street Anglesea, VIC

 3
  1
  2

A CLASSIC COTTAGE JUST 350M FROM THE SURF CLUB!

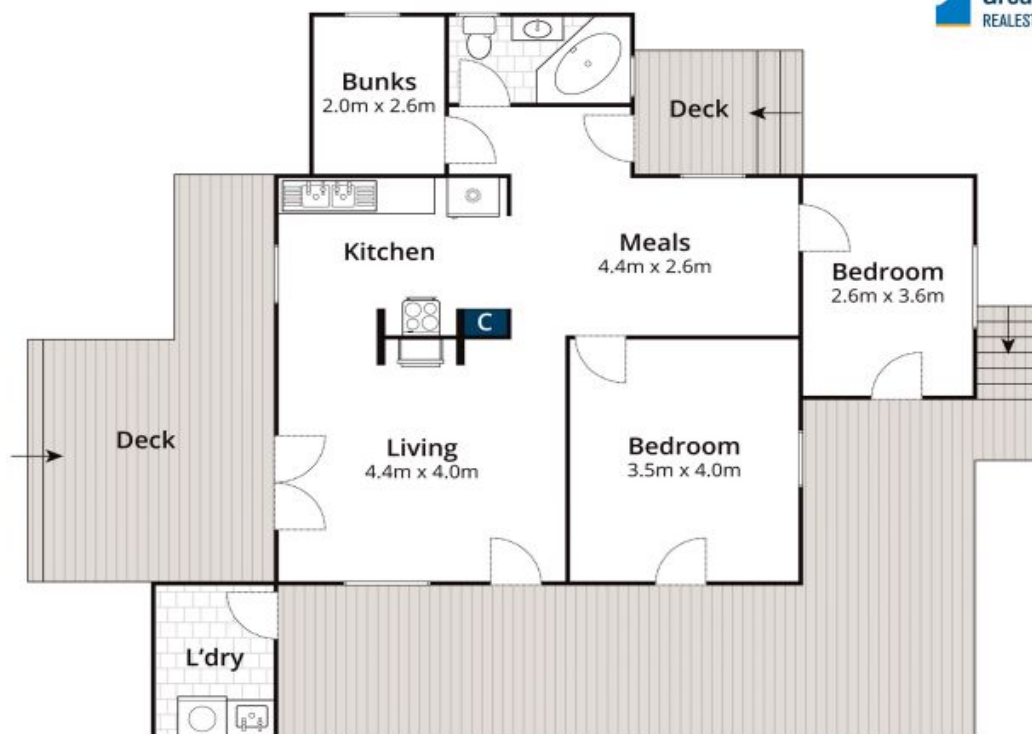
A fabulous position for anyone looking for easy beach and SLSC access whilst close to all the great amenities that Anglesea has to offer. This single level weatherboard home has been meticulously renovated throughout, so if you are looking for a property that you could move straight in to, then look no further than this one. Blonde timber hardwood floors and timber panelled walls complement the stunning white and warm colour scheme and the stylish fittings imbibe a truly coastal feel of relaxation.

A welcoming porch entry (with sea views) leads through French doors to the open living room kept warm by a Nectre combustion wood fire and cooled by split A/C. The kitchen has excellent cupboards & drawers, wooden bench tops & modern appliances which connect perfectly to the second living/dining room which captures sunlight and has a door that leads out to the rear timber deck. One of the great features of this home is the huge wrap around verandah decked in spotted gum boards. This undercover space captures the sunshine & warmth of

Price: \$1,480,000

Ben Jackson
0437 380 706

James Worssam
0418 585 815



Approx House Area 81m²

Whilst bwrm.com.au has made every attempt to ensure the accuracy of the floor plan contained here, measurements are approximate and no responsibility is taken for any error, omission, or mis-statement. This plan is for illustrative purposes only.



47A Harvey Street, Anglesea