



14 Fairway Drive Anglesea, VIC

 3  2  4

## THE WHOLE IN ONE

Backing directly onto the 18th hole of the Anglesea Golf Course, this flexible property offers the option of holiday living or living of a more permanent nature.

A single level, low maintenance brick and weatherboard home which allows you to walk straight out the back door and onto the 18th fairway as you negotiate your way around the kangaroos that frequent the course and stroll up to for a meal, a round of golf or a round of drinks.

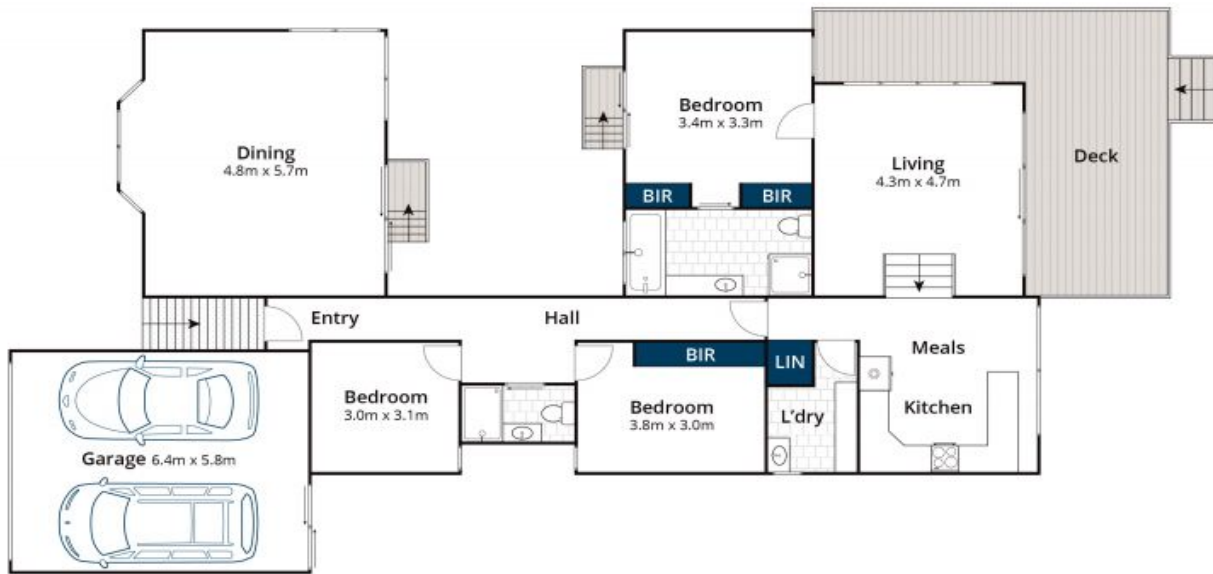
Comprising 3 bedrooms, main bathroom and large ensuite, with a separate lounge area at the front and a sunny living/kitchen/dining area at the rear plus a double lock up garage.

The level 585 sqm block faces east at the rear providing a beautiful sunny aspect from the kitchen/living area onto the golf course as the morning sun comes up.

**Price:** \$1,005,000

**James Worssam**  
0418 585 815

**Ben Jackson**  
0437 380 706



Approx House Area 162m<sup>2</sup>

Whilst [brm.com.au](http://brm.com.au) has made every attempt to ensure the accuracy of the floor plan contained here, measurements are approximate and no responsibility is taken for any error, omission, or mis-statement. This plan is for illustrative purposes only.



## 14 Fairway Drive, Anglesea