



58 Charles Street Lorne, VIC



3



2



2

## SIMPLY EASY LIVING IN BLUE CHIP LOCALE!

If you are looking for a spacious, neat, low maintenance property in one of Lorne's most sought after streets, the search is over!

Located on the high side of Charles Street and on the corner of Wallace Street on a 488 sqm allotment. The "tri level" design provides ample space and separation for the family. Comprising three bedrooms, two bathrooms and dual living areas and a spacious, North facing open plan kitchen/ dining lounge area, opening to covered outdoor deck space, perfect for all year round use.

Fantastic ocean and coastal views can be achieved from upstairs and down. Being sold mostly furnished, offers convenience to the new owners to move straight in.

A double lock up garage completes the package for this ideal coastal property.

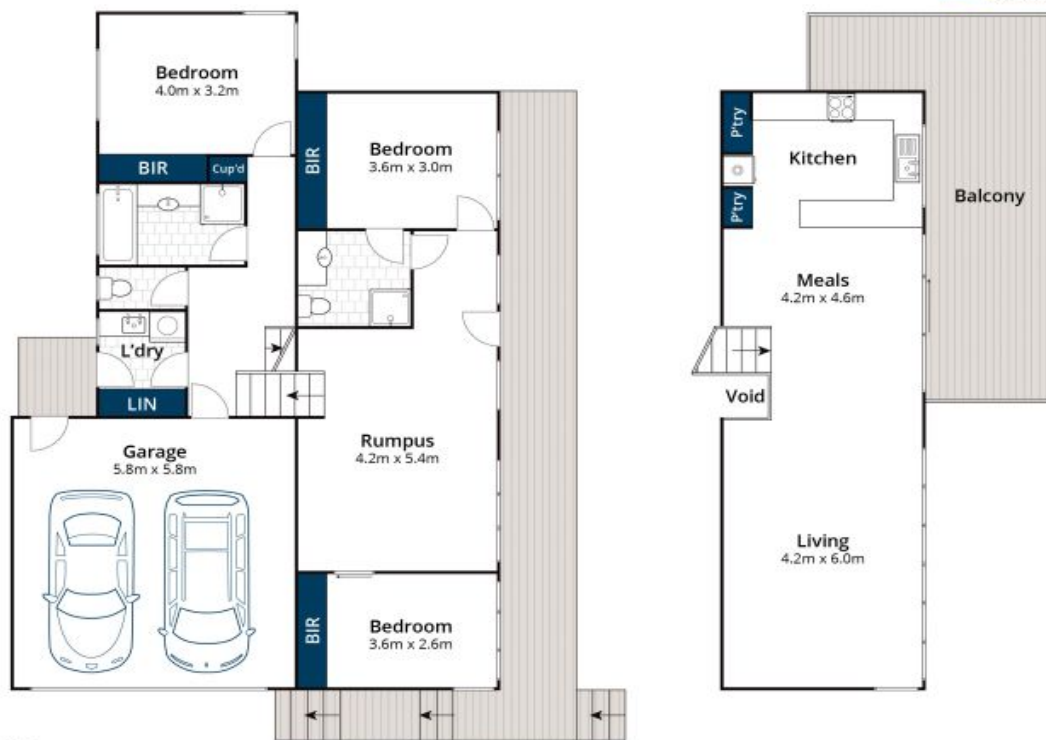
**Price:** \$2,000,000

**Tyrone Provan**

0405 124 799

**Karen Stribling**

0439 650 838



Approx. Area 186m<sup>2</sup>

Whilst [bwrn.com.au](http://bwrn.com.au) has made every attempt to ensure the accuracy of the floor plan contained here, measurements are approximate and no responsibility is taken for any error, omission, or mis-statement. This plan is for illustrative purposes only.



**58 Charles Street, Lorne**