

93 Dorman Street Lorne, VIC

 4  2  4

## NORTHERN EXPOSURE

The rarest of opportunities is being offered to the market for the first time. Approximately nine acres of natural bush and a four-bedroom home overlooking Stony Creek and the Great Ocean Road to Lorne.

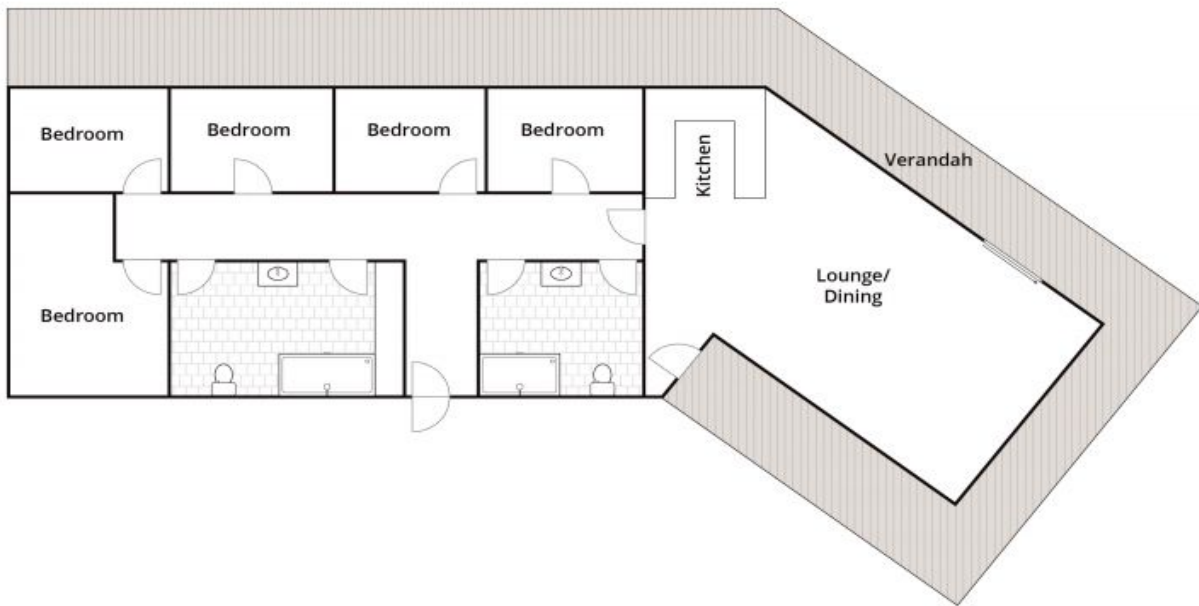
Existing residence offers comfortable laid back living from day one and with the site provides a mid to long term opportunity to capitalise. Seldom does such a Lorne acreage present so close to the high tide mark of Louttit Bay.

A leisurely walk down Adderley Avenue, under the Stony Creek bridge and your toes are in the sand without having to cross the Great Ocean Road.

Expression of Interest Closing April 26 (Unless sold prior)

**Ian Stewart**  
0418 522 571

**Tyrone Provan**  
0405 124 799



Whilst [brwm.com.au](http://brwm.com.au) has made every attempt to ensure the accuracy of the floor plan contained here, measurements are approximate and no responsibility is taken for any error, omission, or mis-statement. This plan is for illustrative purposes only.

## 93 Dorman Street, Lorne