



1 Manna Gum Close Anglesea, VIC



3



2



2

## A BEACH HOUSE FOR EVERYONE

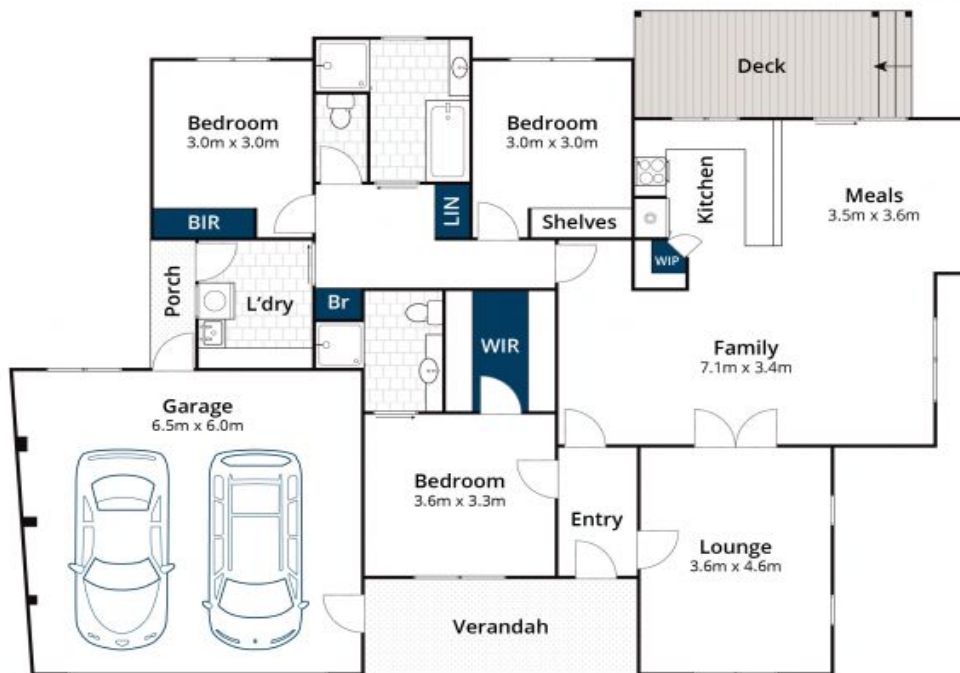
Fantastic design greets the fortunate new owners of this beautifully maintained 3 bedroom family brick beach home. Situated on a quiet street and adorning over 445 sqm of coastal landscaped garden with a beautiful outlook from both living spaces. Positioned perfectly to take advantage of the sensational Great Otway National Parks walking/bike tracks, yet close to the glorious scenery and surf of Anglesea's main patrolled beach, river and shopping precinct. Commanding an elevated position providing an abundance of natural light and surrounded by a lush established garden, this home offers the ideal coastal escape or wonderful permanent home.

**Ben Jackson**

0437 380 706

**James Worssam**

0418 585 815



Approx House Area 176m<sup>2</sup>

Whilst [bwrn.com.au](http://bwrn.com.au) has made every attempt to ensure the accuracy of the floor plan contained here, measurements are approximate and no responsibility is taken for any error, omission, or mis-statement. This plan is for illustrative purposes only.

## 1 Manna Gum Close, Anglesea