



33 Wallace Street Wye River, VIC



3



2



3

ICONIC WYE LOCATION WITH 2 TITLES

Enjoy this world class completely unimpeded Wye River beach and point view, situated in one of the most desirable positions on the Great Ocean Road and enhanced by the crashing waves immediately below and two blocks of land, each on separate titles.

One of the most dramatic settings, very private and so close to all the essential township amenities. You can walk everywhere!

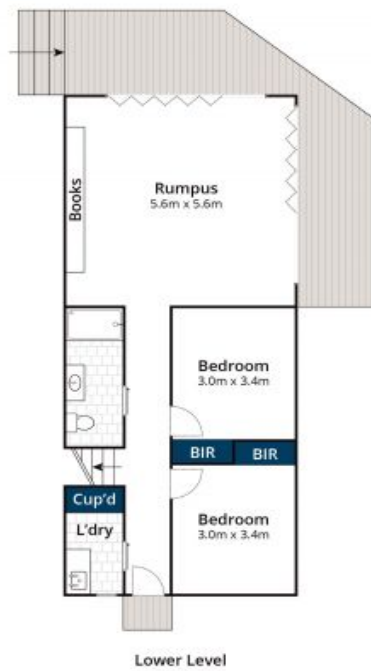
Comprising 3 bedrooms, 2.5 bathrooms, 2 living areas, the property is nestled at the end of Wallace Street and has legal vehicle access via the southern entrance of 'Paddys Path'. Locally built, very well appointed, with a layout that is perfect for families and anyone looking to holiday rent the home. Every room has a view!

Michael Coutts

0438 356 624

Michael Coutts

0438 356 624



Approx House Area 182m²

Whilst bwrm.com.au has made every attempt to ensure the accuracy of the floor plan contained here, measurements are approximate and no responsibility is taken for any error, omission, or mis-statement. This plan is for illustrative purposes only.



33 Wallace Avenue, Wye River