



9/4 Smith Street Lorne, VIC



## STUNNING PREMIUM LUXURY PENTHOUSE

Expansive north facing rooftop three bedroom apartment with sweeping 270 degree views from Lorne's main beach, Louttit Bay, the Pier, Great Ocean Road to the Aireys Inlet Lighthouse, the horizon of the southern ocean and everything in between.

With expanses of glass on two sides the internal ambience is enhanced by the natural beauty of Lorne, and the 45 sqm outdoor area a private domain of its own. Spacious kitchen/dining/living zone enjoying the full sweep in elevated privacy.

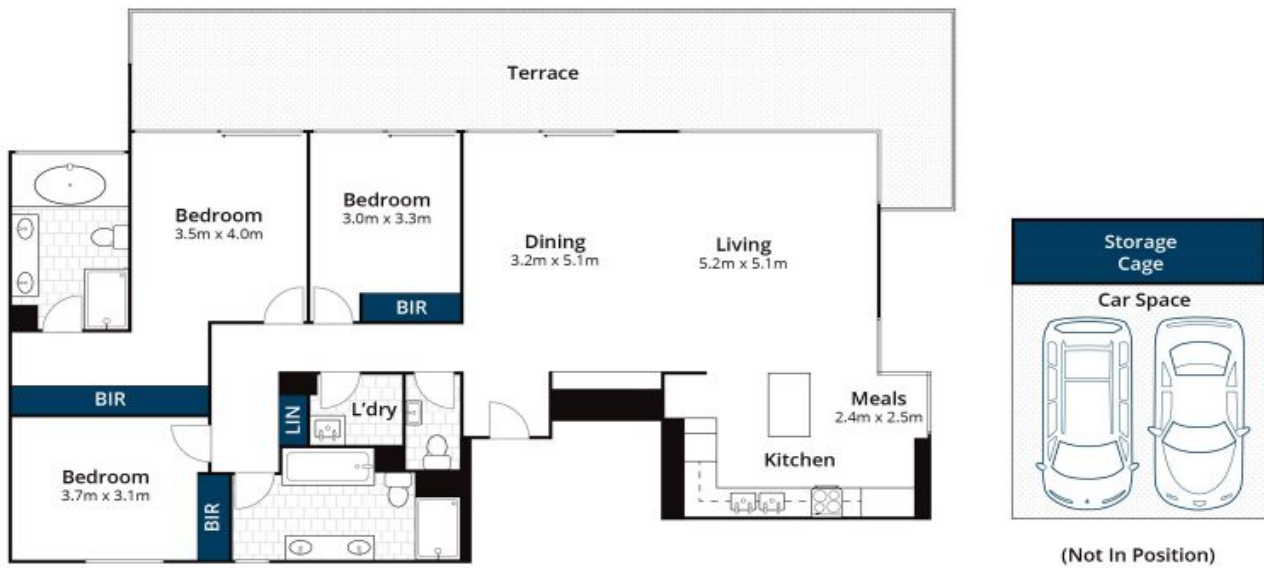
Three spacious bedrooms, master with ensuite (including spa bath) and walk-through robe. With two secure basement car parks, storage cage and direct lift access luxurious low maintenance coastal living doesn't get any better.

Being presented to the market for the very first time this is a once in a lifetime opportunity to secure this exclusive Smith Street position with unparalleled views.

**Price:** \$3,050,000

**Ian Stewart**  
0418 522 571

**Tyrone Provan**  
0405 124 799



Approx House Area 156m<sup>2</sup>

Whilst [www.bwrm.com.au](http://www.bwrm.com.au) has made every attempt to ensure the accuracy of the floor plan contained here, measurements are approximate and no responsibility is taken for any error, omission, or mis-statement. This plan is for illustrative purposes only.

**9/4 Smith Street, Lorne**