



19/2-10 Ocean Road South Road Lorne, VIC



3



2



1

## OCEAN FRONT PACIFIC RESIDENCE

If the sound of the waves breaking and the idea of a fresh seafood platter, an espresso or a chilled glass of Rose on your front door step, is your idea of heaven, then this property is for YOU! Ideally positioned on the 4th level of the famous Pacific Apartments complex is this renovated and tastefully upgraded 3 bedroom, 2 bathroom residence. With an orientation that boasts both North and East ocean and pier views from multiple deck spaces. Spacious and functional open plan kitchen with stone bench tops, live oven and induction cook top and plenty of cupboard storage also boasting a breakfast bar to accommodate the whole family. The living and dining area is enhanced by plenty of natural light, reverse cycle heating and cooling, all spaces opening to the outdoor deck areas. Off the living area and opening to east facing deck is the master bedroom suite with private and renovated bathroom, all boasting a birds eye pier view and outlook onto Aireys Inlet Lighthouse. The property boasts 2 further bedrooms with robes and a westerly orientation, central bathroom and separate laundry/storage area.

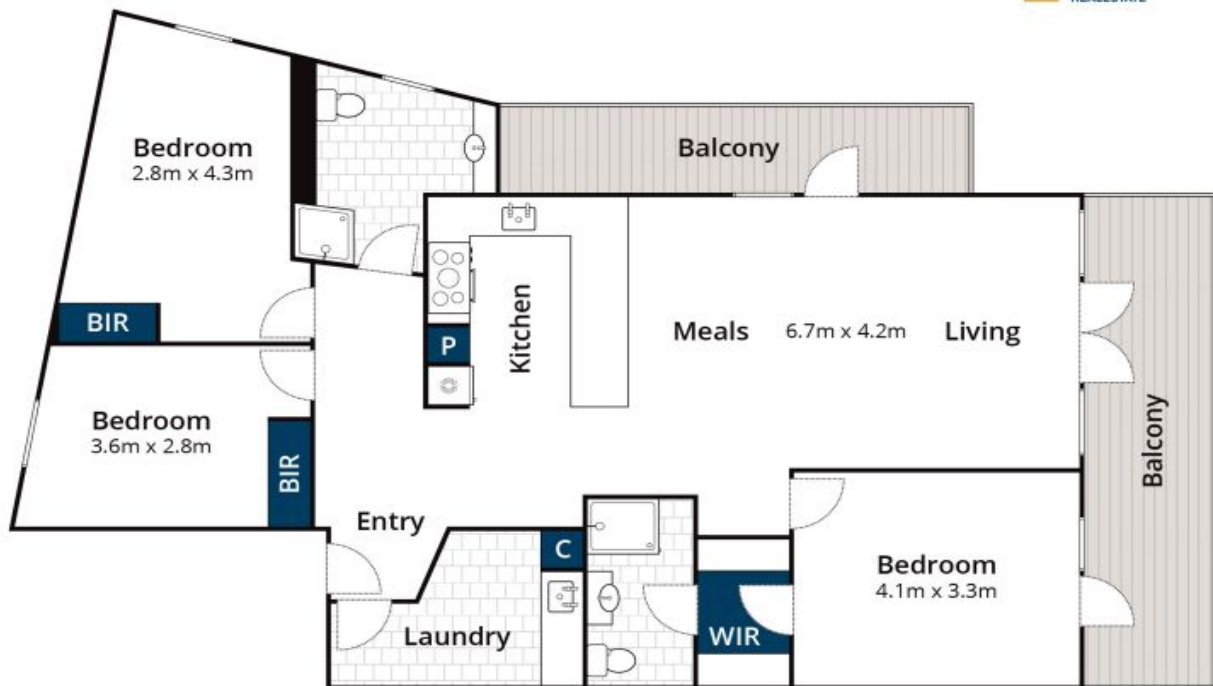
**Price:** \$1,300,000

**Karen Stribling**

0439 650 838

**Tyrone Provan**

0405 124 799



Approx House Area 116m<sup>2</sup>

Whilst [www.bwrm.com.au](http://www.bwrm.com.au) has made every attempt to ensure the accuracy of the floor plan contained here, measurements are approximate and no responsibility is taken for any error, omission, or mis-statement. This plan is for illustrative purposes only.



## 19/2-10 Ocean Road South, Lorne