

15/148-170 Mountjoy Parade Lorne, VIC

CENTRALLY LORNE

Magnificent purpose built ocean front leasehold restaurant opportunity. The beach viewing corner site features a spacious indoor and under cover dining/alfresco space unmatched in Lorne's bustling commercial strip.

A unique opportunity to be part of what is quickly becoming Victoria's premier regional food destination.

Long lease terms available to suitable tenant.

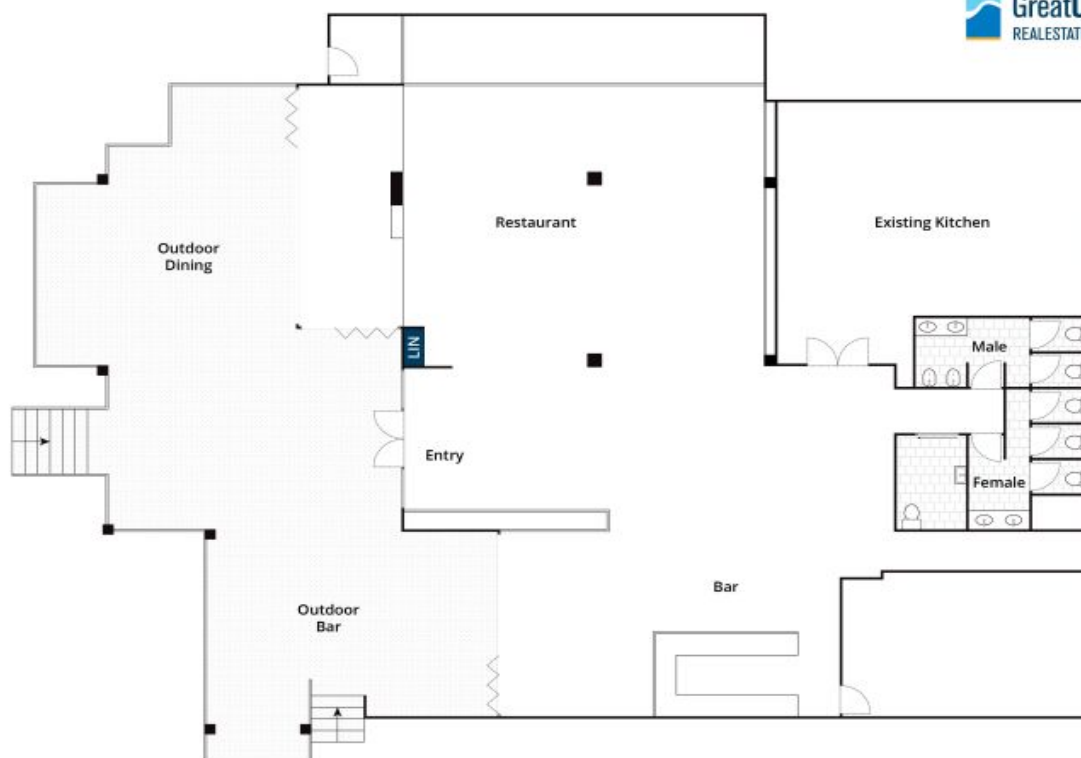
Council Rates: \$19,000.00/year (approx)

Water Rates: \$495.00/year (approx)

Strata Rates: \$19,360.00/year (approx)

Ian Stewart

0418 522 571



Whilst bwrn.com.au has made every attempt to ensure the accuracy of the floor plan contained here, measurements are approximate and no responsibility is taken for any error, omission, or mis-statement. This plan is for illustrative purposes only.

15/248-274 Mountjoy, Parade Lorne