



2/22 Otway Street Lorne, VIC

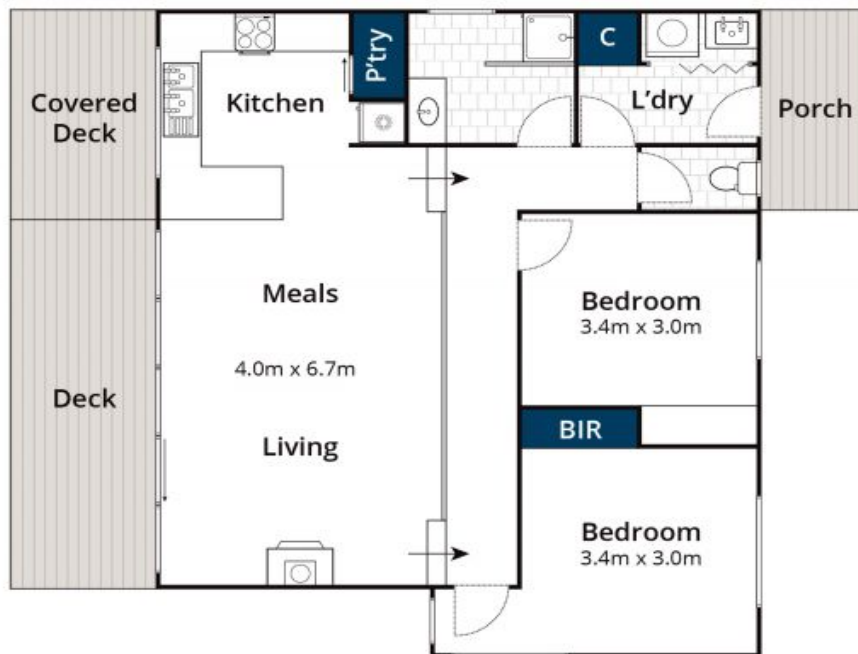
 2  1  2

## TREEHOUSE TOWNHOUSE IN THE HEART OF TOWN

Situated within the treetop canopies and with effortless access to everything Lorne has to offer this home comprises 2 bedrooms, 1 modern bathroom and a spacious open plan kitchen dining lounge area which flows onto a large, partially covered balcony with a pleasant leafy outlook and a glimpse of blue water. Being sold on a walk in walk out basis certainly adds to the attraction. If you've been searching for a private, low maintenance and fantastically located home, here it is!

**Tyrone Provan**  
0405 124 799

**Karen Stribling**  
0439 650 838



Approx. Area 81m<sup>2</sup>

Whilst [bwm.com.au](http://bwm.com.au) has made every attempt to ensure the accuracy of the floor plan contained here, measurements are approximate and no responsibility is taken for any error, omission, or mis-statement. This plan is for illustrative purposes only.



**2/22 Otway Street, Lorne**