



16 Richardson Boulevard Lorne, VIC



3



2



2

## A TRANQUIL ABODE

Enjoy the natural bush environment with an Erskine River backdrop in the centre of Lorne.

An environment with off street vehicle access at the rear and pedestrian access to Erskine River Reserve and directly into town.

Set over two levels and comprising three bedrooms, two bathrooms and a large open plan kitchen dining lounge area which opens onto an expansive outdoor deck, sitting beneath the tree canopy provides your own very special summer bushland oasis to the sounds of the flowing river below.

Ample of off street parking and a low maintenance landscape provide all and more in the heart of Lorne.

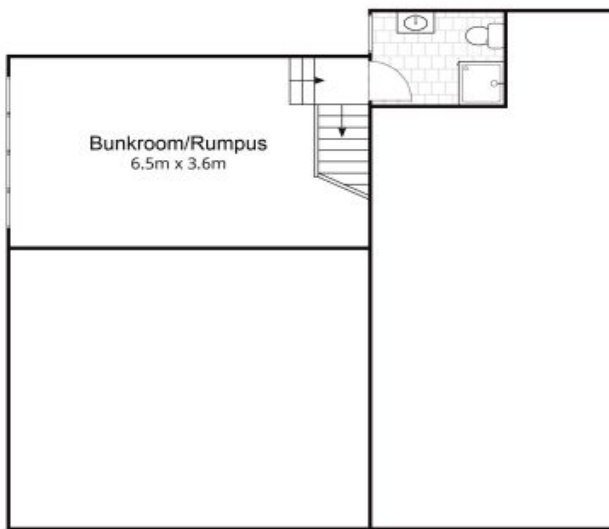
**Price:** \$2,010,000

**Tyrone Provan**

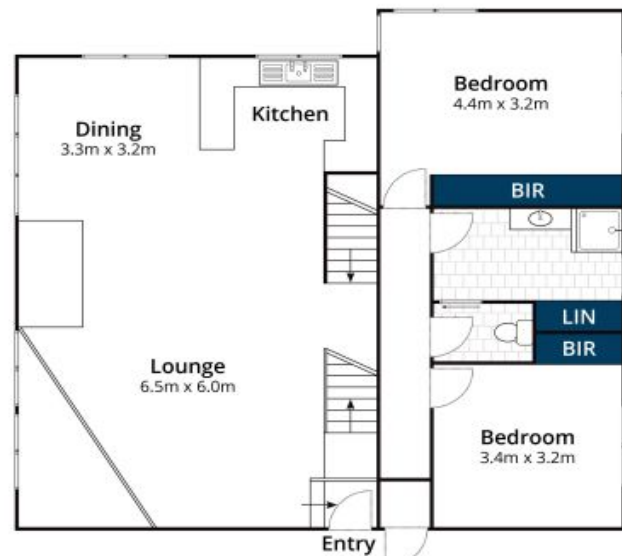
0405 124 799

**Michael Coutts**

0438 356 624



Lower Floor



Upper Floor

Approx. House Area 134m<sup>2</sup>

Whilst [brm.com.au](http://brm.com.au) has made every attempt to ensure the accuracy of the floor plan contained here, measurements are approximate and no responsibility is taken for any error, omission, or mis-statement. This plan is for illustrative purposes only.

**16 Richardson Boulevard, Lorne**