



12 Fletcher Street Lorne, VIC



4



2



4

FAMILY SIZE FUN ON FLETCHER!

Peacefully and privately located in the quiet, leafy Cul de Sac of Fletcher St, modestly tucked away from the hustle and bustle of downtown, yet only a ten-minute walk should you want to be part of the action!

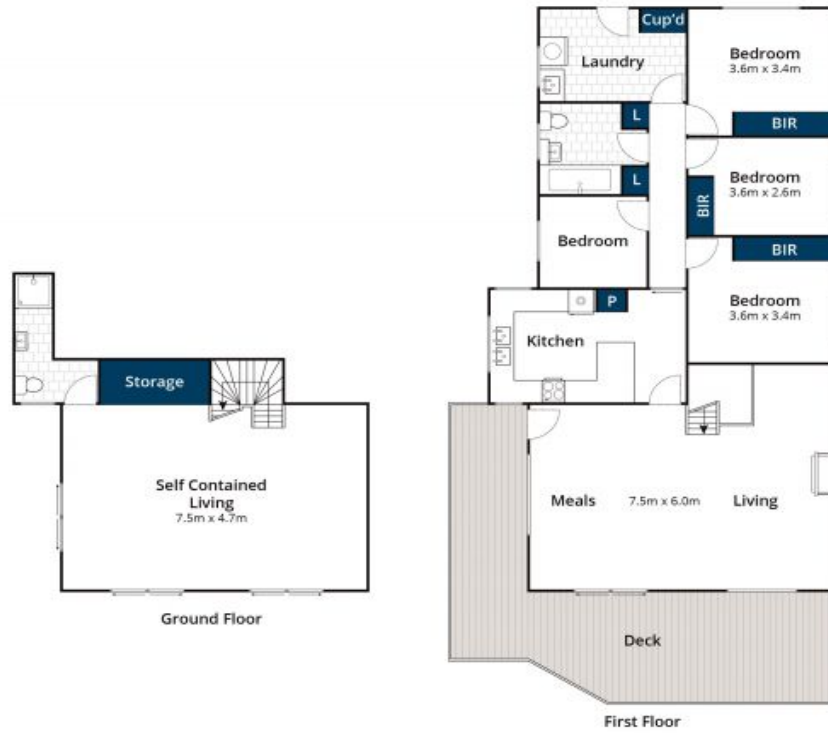
Family size living is on offer here!! Sited on 615sqm of land is this double storey home, upper level boasting large open plan living and dining area with wood fire heater and reverse cycle heating/cooling. Large functional, modern kitchen all opening to expansive deck space, taking in a westerly bush outlook, capturing evening sunsets and the peaceful sounds of birds and surrounding wildlife! Upper level also boasts 4 bedrooms with central bathroom, separate laundry space. Access to fully fenced back yard for kids or 4 legged friends!

Karen Stribling

0439 650 838

Ian Stewart

0418 522 571



Approx. House Area 163m²

Whilst www.bwrm.com.au has made every attempt to ensure the accuracy of the floor plan contained here, measurements are approximate and no responsibility is taken for any error, omission, or mis-statement. This plan is for illustrative purposes only.

12 Fletcher Street, Lorne