



22/2-10 Ocean Road South Lorne, VIC

 4  3  2

## PENTHOUSE PERFECTION

Unquestionably the best apartment in the Grand Pacific Apartment complex.

This sprawling 4 bedroom, 3 bathroom (with dual ensuited master bedrooms) penthouse apartment has amazing 270° panoramic ocean and coastline views that cannot ever be built out!

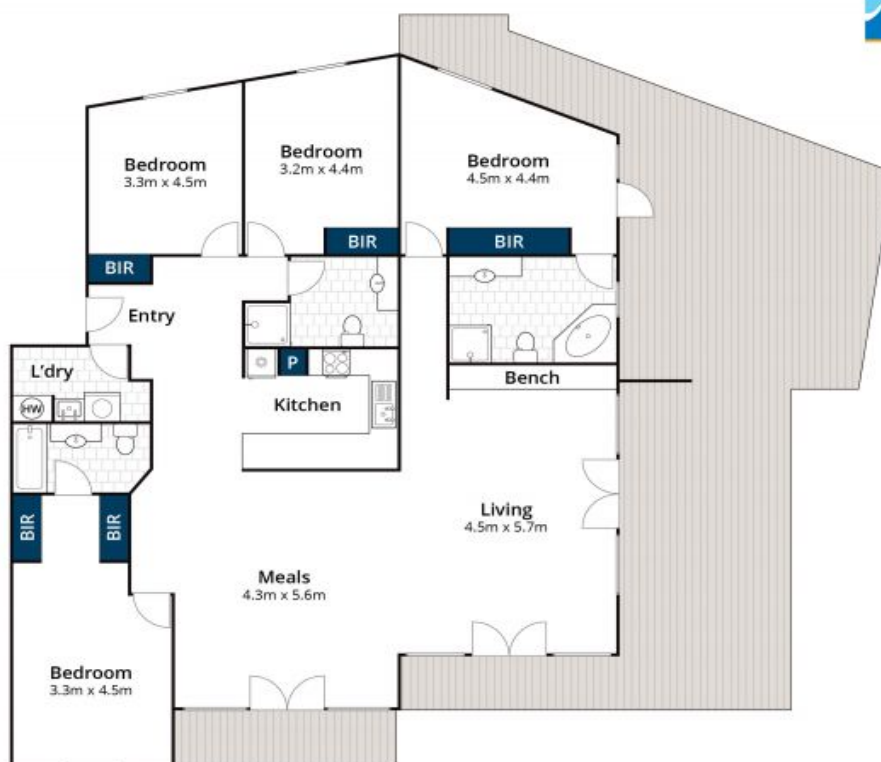
The wrap around decking captures views to the east over the iconic Lorne Pier to the Aireys Inlet Lighthouse but importantly an expansive north facing deck looks back to Lorne's main beach plus township. Enjoy the sun all day all year long which is rare for a Lorne property.

Immaculately presented, as the current owner has rarely rented the apartment. Features include ceiling to floor windows throughout, timber flooring in living area, tiled wet areas, multiple split system units, spacious kitchen, skylights, 2 carparks on title and we are

**Price:** \$2,000,000

**Michael Coutts**  
0438 356 624

**Tyrone Provan**  
0405 124 799



Approx. Area 168m<sup>2</sup>

Whilst [bwrn.com.au](http://bwrn.com.au) has made every attempt to ensure the accuracy of the floor plan contained here, measurements are approximate and no responsibility is taken for any error, omission, or mis-statement. This plan is for illustrative purposes only.



**22/2-10 Ocean Road South, Lorne**