



14 Amaroo Crescent Aireys Inlet, VIC

 4
  1
  2

## CLASSIC COASTAL BEACH HOUSE

A classic coastal beach house perfect after long days at the beach in summer, or to enjoy in winter curled up by the wood heater.

This eye catching double storey dwelling is located on the beach side of the Great Ocean Road. You can leave the car at home and enjoy all that Aireys Inlet has to offer on foot.

With generous accommodation of four bedrooms, main bathroom plus a second shower and toilet in the laundry. An open plan kitchen/living/dining area with polished floors and an adjoining lounge room.

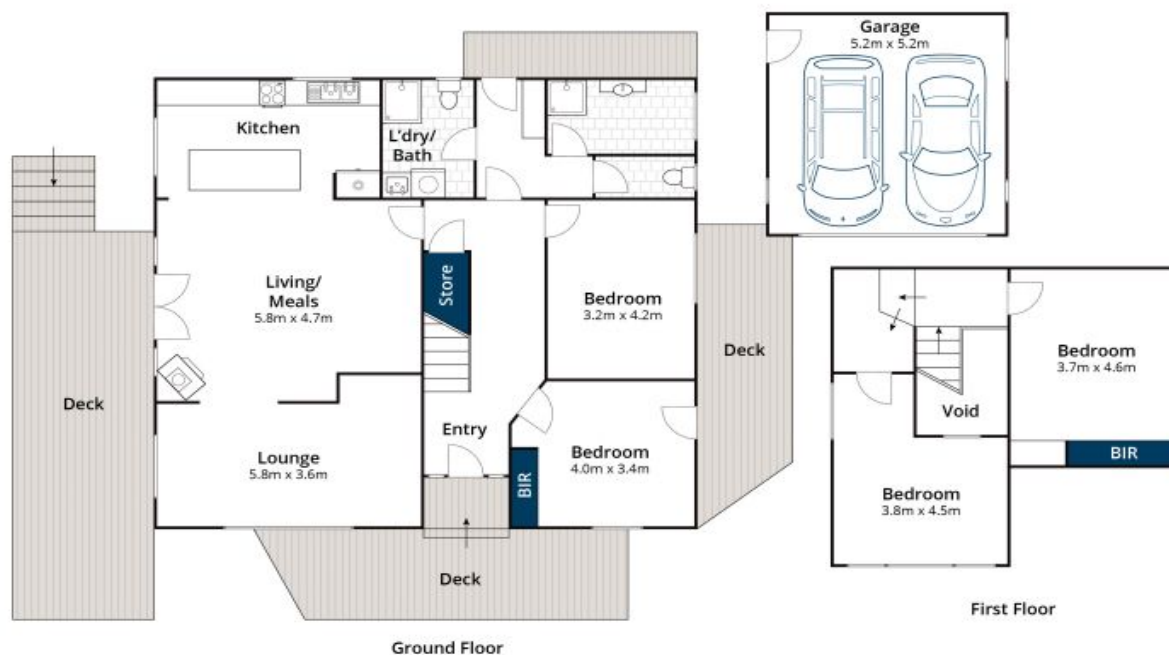
There is also a double garage already lined to provide flexible use for extra accommodation or a gym.

**James Worssam**

0418 585 815

**Ben Jackson**

0437 380 706



Approx House Area 170m<sup>2</sup>

Whilst [bwrm.com.au](http://bwrm.com.au) has made every attempt to ensure the accuracy of the floor plan contained here, measurements are approximate and no responsibility is taken for any error, omission, or mis-statement. This plan is for illustrative purposes only.



## 14 Amaroo Crescent, Aireys Inlet