



Johanna, VIC



3



3



4

LANDMARK BEACH HOME OVERLOOKING JOHANNA

Perched confidently within the foothills and valley the scene is truly picture perfect and this acutely desirable, absolute beach residence has a commanding presence with explosive views of rolling hills, Southern Ocean and beyond. Sculpted design, by Mark Gratwick and featured in Australia's Best Beach Houses publication.

The home is avant-garde with its angular roof line, set on slightly undulating topography of the land. The raised roof allows a greater panoramic view thanks to its razor edge soaring towards the sky.

Highly influenced by the geometric form, this home exhibits some of the best views available across the southern ocean and Johanna beach. Nestled on 2 hectares (approx.) The position of the house reflects the best choice in viewing position, surrounded by the native landscape design gardens with abundant wildlife and fauna.

Price:

PRICE ON APPLICATION

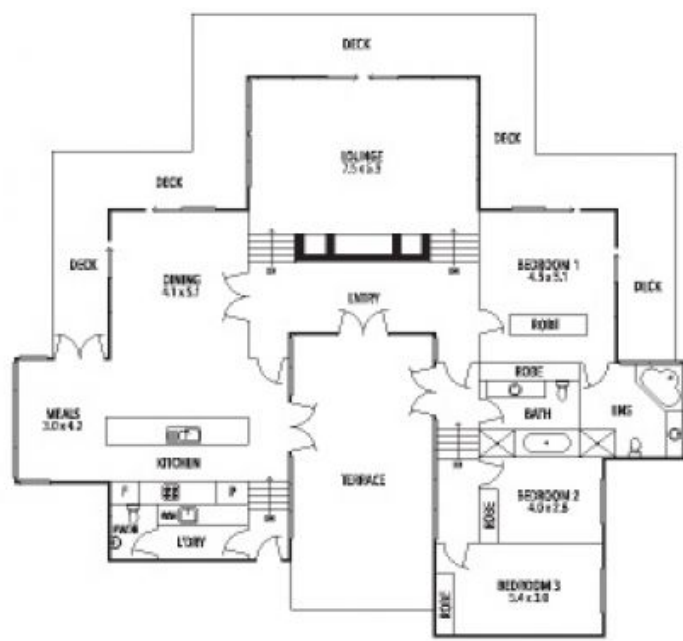
Darren Brimacombe

0418 317 424

Darren Brimacombe

0418 317 424

310 Blue Johanna Road Johanna



THE ABOVE PLAN IS AN ARTIST'S IMPRESSION ONLY. IT INCLUDES ELEMENTS THAT ARE FOR DISPLAY PURPOSES ONLY AND MAY NOT BE TO SCALE. LANDSCAPING SHOWN IS INDICATIVE ONLY. DIMENSIONS ARE APPROXIMATE.

