

1 Robyn Road Moggs Creek, VIC

 5
  3
  2

## PRIVACY, VIEWS AND BEACH ACCESS

A generational opportunity presents itself in the much sought after, coastal hamlet of Moggs Creek.

Abutting National Park yet only metres from a private beach access track this property was last offered for sale in the 70s.

This very solid, brick and timber house has ocean views that cannot be built out and with generous accommodation comprising of five bedrooms, two living areas and three bathrooms. The land size is around 1261 sqm.

This is one of the closest houses to the beach on the entire Great Ocean Road. If privacy, views and beach access are on your wish list, then this property commands your attention.

**Price:**

CONTACT AGENT

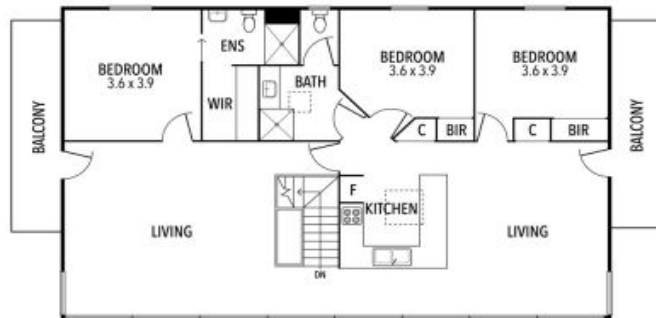
**James Worssam**

0418 585 815

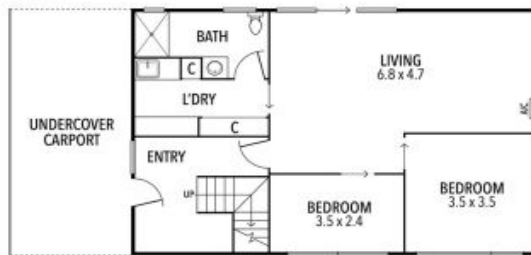
**Ben Jackson**

0437 380 706

# 1 Robyn Road, Moggs Creek



FIRST FLOOR



GROUND FLOOR



THE ABOVE PLAN IS AN ARTIST'S IMPRESSION ONLY, IT INCLUDES ELEMENTS THAT ARE FOR DISPLAY PURPOSES ONLY AND MAY NOT BE TO SCALE.  
LANDSCAPING SHOWN IS INDICATIVE ONLY. DIMENSIONS ARE APPROXIMATE.

