



57 Polwarth Road Lorne, VIC



3



2



2

## PERCHED AT THE PEAK OF POLWARTH

Immaculately presented three bedroom, two bathroom home with a spacious open plan kitchen dining lounge area and a second living area situated on a 455 sqm allotment. A genuine 180 degree ocean and coastline view from upstairs and down! The home is positioned adjacent to shire reserve giving the property a sense of space, the access to town and all on offer is a breeze thanks to the stairway to Grand Parade opposite. A sensational permanent or holiday home on offer here.

EPR \$1,950,000 to \$2,050,000

**Price:**

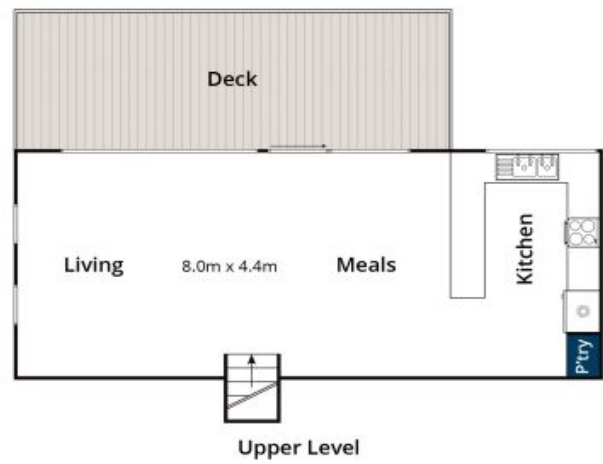
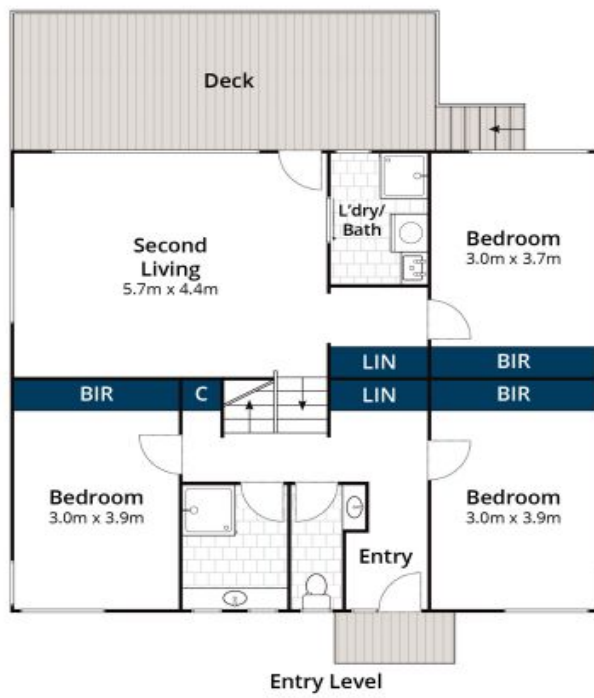
UNDER CONTRACT

**Tyrone Provan**

0405 124 799

**Michael Coutts**

0438 356 624



Approx House Area 143m<sup>2</sup>

Whilst [bwrn.com.au](http://bwrn.com.au) has made every attempt to ensure the accuracy of the floor plan contained here, measurements are approximate and no responsibility is taken for any error, omission, or mis-statement. This plan is for illustrative purposes only.



## 57 Polwarth Road, Lorne