



57 Polwarth Road Lorne, VIC



3



2



2

PERCHED AT THE PEAK OF POLWARTH

Immaculately presented three bedroom, two bathroom home with a spacious open plan kitchen dining lounge area and a second living area situated on a 455 sqm allotment. A genuine 180 degree ocean and coastline view from upstairs and down! The home is positioned adjacent to shire reserve giving the property a sense of space, the access to town and all on offer is a breeze thanks to the stairway to Grand Parade opposite. A sensational permanent or holiday home on offer here.

EPR \$1,950,000 to \$2,050,000

Price:

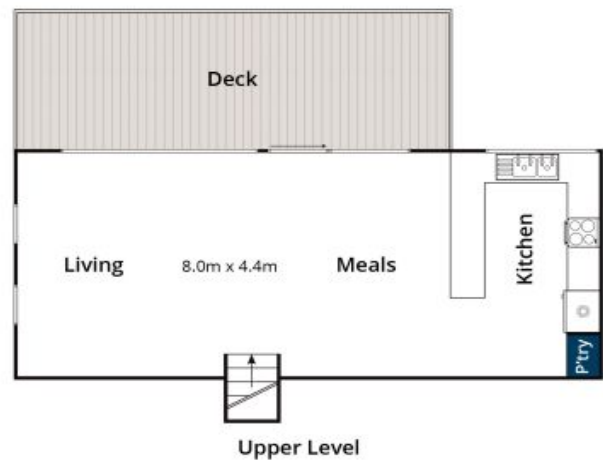
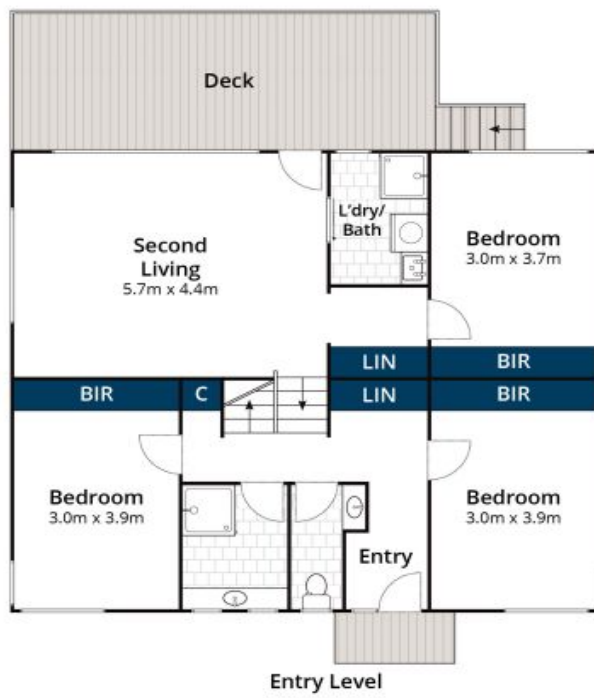
UNDER CONTRACT

Tyrone Provan

0405 124 799

Michael Coutts

0438 356 624



Approx House Area 143m²

Whilst bwrn.com.au has made every attempt to ensure the accuracy of the floor plan contained here, measurements are approximate and no responsibility is taken for any error, omission, or mis-statement. This plan is for illustrative purposes only.



57 Polwarth Road, Lorne