



17 Chatswood Drive Anglesea, VIC



3



1



2

## RUSTIC FAMILY CHARM ON CHATSWOOD!

When comfort, charm and modern versatility is what you are seeking, this welcoming family home is for you!

Open plan and functional timber kitchen opening to light filled living and dining area warmed by wood heater. Featuring cathedral timber ceiling and plenty of natural light, all opening to undercover front and side deck spaces. 2 north facing spacious bedrooms with BIR and reverse cycle heating cooling. Expansive mezzanine space overlooking the family living area perfect as a multi living zone, teenagers retreat or third bedroom.

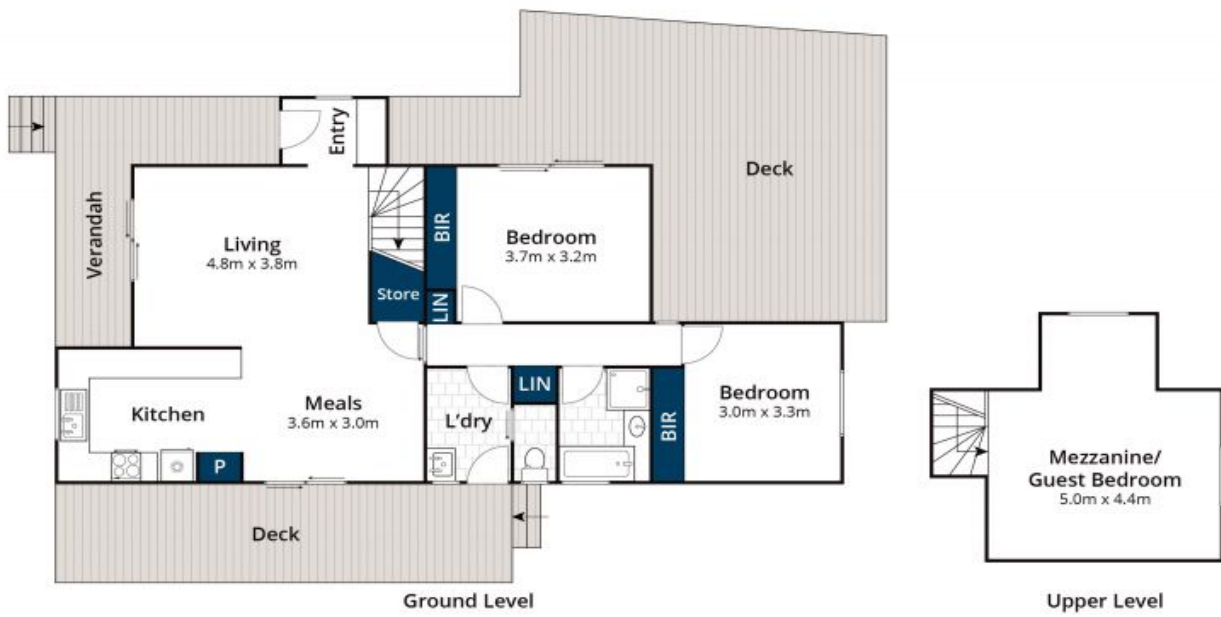
Tranquil treed outlook amongst the low maintenance landscaped gardens, the property offers a spacious, tiered outdoor entertaining area currently home to veggie garden, chicken coup, storage shed, kids play space and a north facing alfresco area, perfect for enjoying a BBQ with all the family. The property comes with approved Architect plans for a brilliant 4-bedroom, 2 bathroom extension.

**Karen Stribling**

0439 650 838

**James Worssam**

0418 585 815



Approx House Area 104m<sup>2</sup>

Whilst [www.bwrm.com.au](http://www.bwrm.com.au) has made every attempt to ensure the accuracy of the floor plan contained here, measurements are approximate and no responsibility is taken for any error, omission, or mis-statement. This plan is for illustrative purposes only.

## 17 Chatswood Drive, Anglesea