



685 Great Ocean Road Eastern View, VIC

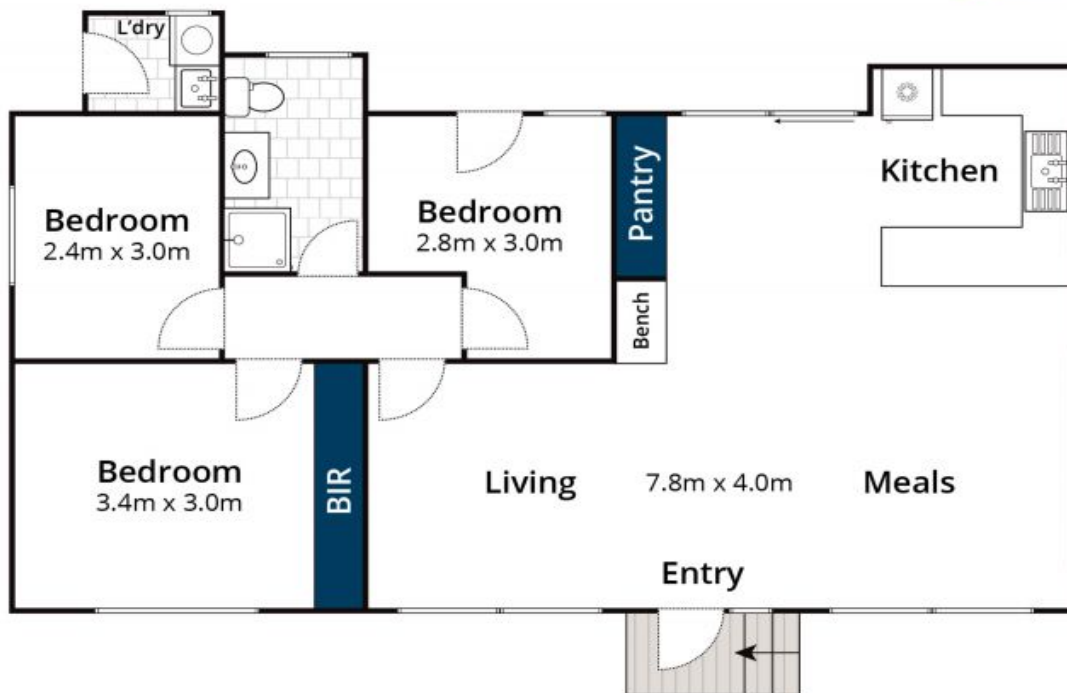
 3  1  2

## ACHIEVABLE FRONT ROW OPPORTUNITY

One of the last remaining, older houses on this most desired stretch of prime Great Ocean Road real estate. The house has had a recent makeover and is ready for use as is and doubles as arguably the cheapest way to secure a front row freehold or an opportunity to enter the market with the idea to renovate, extend or rebuild down the track. Set on one level, the neat three bedroom house is not huge in proportion but is massive in views, position and potential. Boasting land size of around 1490m<sup>2</sup>.

**James Worssam**  
0418 585 815

**Liz Currie**  
0437 213 229



Approx House Area 81m<sup>2</sup>

Whilst [bwm.com.au](http://bwm.com.au) has made every attempt to ensure the accuracy of the floor plan contained here, measurements are approximate and no responsibility is taken for any error, omission, or misstatement. This plan is for illustrative purposes only.



## 685 Great Ocean Road, Eastern View