



25 Fifth Avenue Anglesea, VIC



PANORAMIC OCEAN VISTAS

Nestled amidst Anglesea's tranquil landscape, this coastal sanctuary marries luxury with an intimate connection to nature. Crafted with precision by esteemed local designer and builder, Mark Gleeson, the split-level design stands as a seaside gem, moments from the pristine sands of Point Roadknight and O'Donohue's Beach.

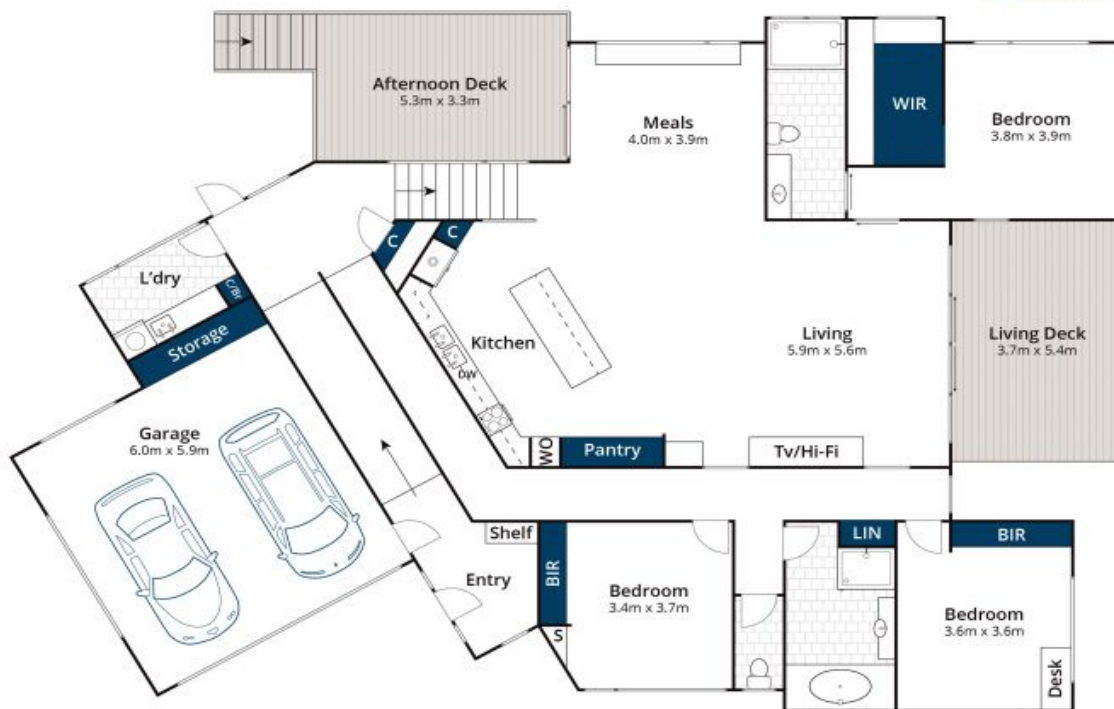
Surrounded by verdant foliage, its contemporary design promises seclusion and modern elegance. Every corner of this elevated sanctuary whispers of refined holidays, with natural textures and sleek lines that echo the home's architectural grace.

The home's contemporary visage ensures privacy while echoing the landscape's raw beauty. The modernity of design merges with the environment, harnessing commanding vistas of the ocean's unfolding canvas. Direct sightlines to Point Roadknight capture a scene of vibrant blue and white water that is nothing short of magical. Embracing its elevated expanse, the

Price: \$2,100,000

Paula Fowler
0407 031 178

Karen Stribling
0439 650 838



Whilst bwrn.com.au has made every attempt to ensure the accuracy of the floor plan contained here, measurements are approximate and no responsibility is taken for any error, omission, or mis-statement. This plan is for illustrative purposes only.

25 Fifth Avenue, Anglesea



Approx House Area 267m²
Approx Land Area 783m²

Whilst bwrn.com.au has made every attempt to ensure the accuracy of the floor plan contained here, measurements are approximate and no responsibility is taken for any error, omission, or mis-statement. This plan is for illustrative purposes only.

25 Fifth Avenue, Anglesea