



6 Summerhills Avenue Lorne, VIC



4



3



2

CAPTIVATING VIEWS IN A COVETED LOCATION

A fantastic family orientated home set over three levels, comprising four bedrooms, three bathrooms and multiple living areas. The large open plan kitchen/ dining/lounge area opens onto a spacious balcony taking in the entire arc of Louttit Bay and part of the State Forest that surrounds Lorne. Positioned on a 840 sqm allotment which borders the Stony Creek Nature Reserve providing great access to the magical Stony Creek lily pond walk and pristine North Lorne rock pools and beach. Embrace the exceptional lifestyle on offer at this stunning property.

Price:

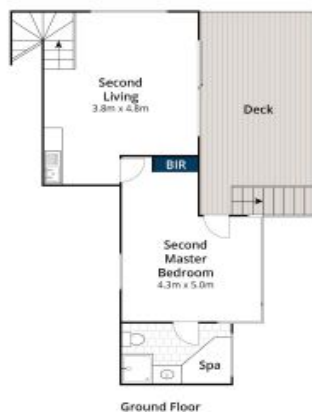
\$1,999,999

Tyrone Provan

0405 124 799

Michael Coutts

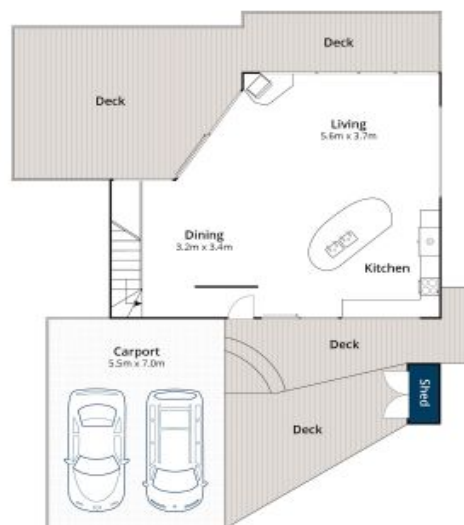
0438 356 624



Ground Floor



Mid Floor



Top Floor

Whilst bwrn.com.au has made every attempt to ensure the accuracy of the floor plan contained here, measurements are approximate and no responsibility is taken for any error, omission, or mis-statement. This plan is for illustrative purposes only.

6 Summerhills Avenue, Lorne